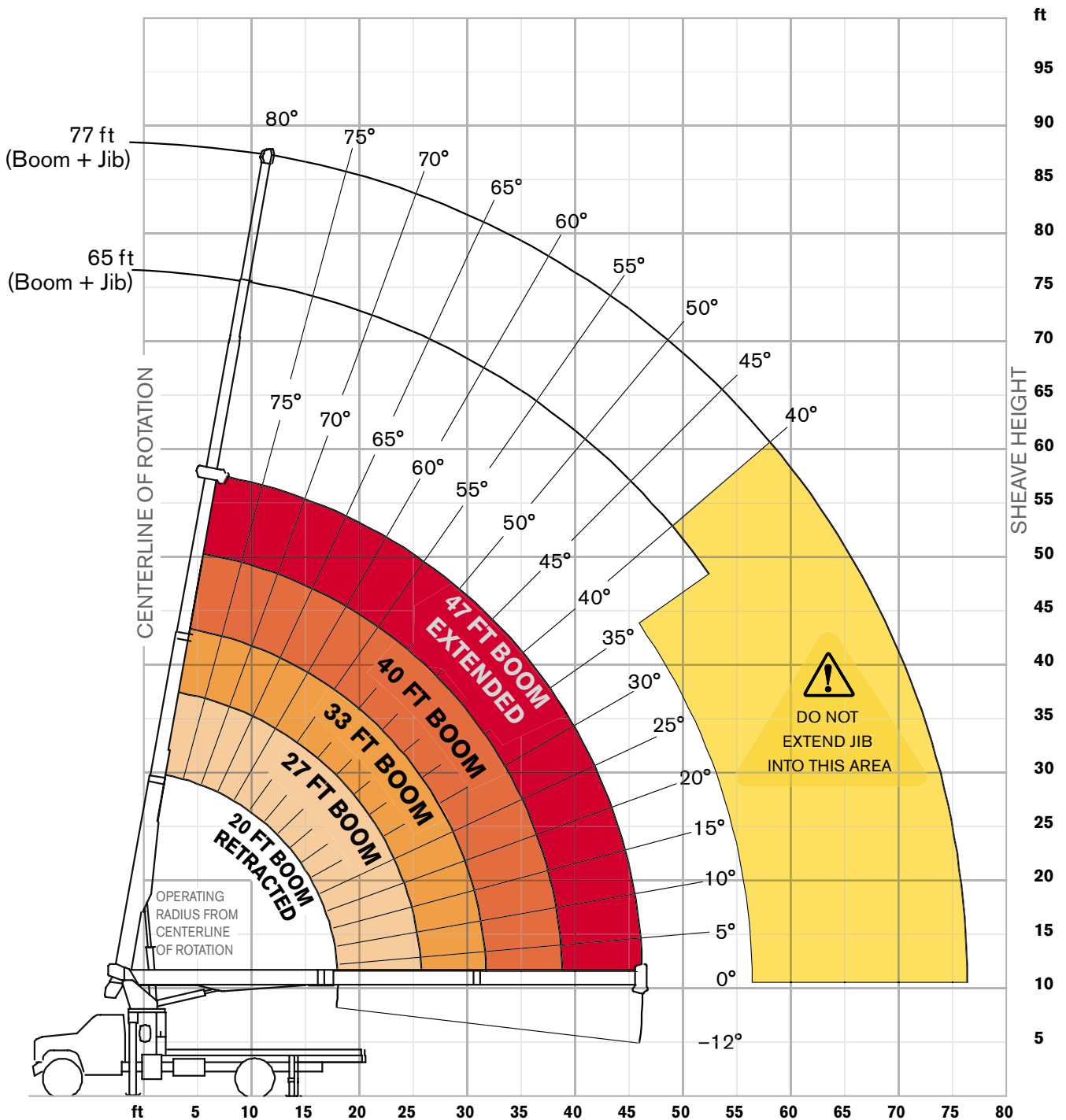
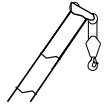


RANGE DIAGRAM

BT 2047

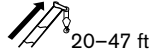
Outriggers Fully Extended (100%)



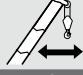
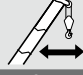
BOOM LOAD CHARTS

BT 2047

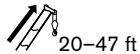
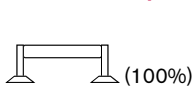
Outriggers Fully Extended (100%)




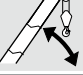
Standard ASME B30.5

	Boom Length					
	20	27	33	40	47	
ft	lb	lb	lb	lb	lb	ft
5	20,000	12,520				5
8	12,830	12,230	11,850	11,170		8
10	10,830	10,270	9,900	9,370	8,220	10
12	9,350	8,860	8,520	8,130	7,430	12
14	8,150	7,800	7,480	7,370	6,730	14
16	7,240	7,100	6,810	6,540	6,090	16
18	5,850	6,360	6,120	5,870	5,450	18
20		5,660	5,550	5,320	4,930	20
25		3,900	4,300	4,260	4,060	25
28			3,700	3,690	3,510	28
31			2,890	3,210	3,140	31
35				2,690	2,670	35
38				2,110	2,370	38
40					2,250	40
45					1,800	45
46					1,465	46

With Jib, Retracted and Extended



Standard ASME B30.5

	Jib Capacities for All Boom Lengths										
	78°	75°	70°	65°	60°	55°	50°	45°	40°	35°	
ft	lb	lb	lb	lb	lb	lb	lb	lb	lb	lb	ft
18	4,400	3,700	2,800	2,180	1,760	1,430	1,200	1,040	900	800	18
30	2,060	1,660	1,260	1,000	810	700	600	550	500	-	30

Notes to lifting capacity

Lifting capacities do not exceed 85% of tipping load. Weight of hook blocks and slings is part of the load, and is to be deducted from the capacity ratings. Consult operation manual for further details.

Note: Data published herein is intended as a guide only and shall not be construed to warrant applicability for lifting purposes. Crane operation is subject to the computer charts and operation manual both supplied with the crane.