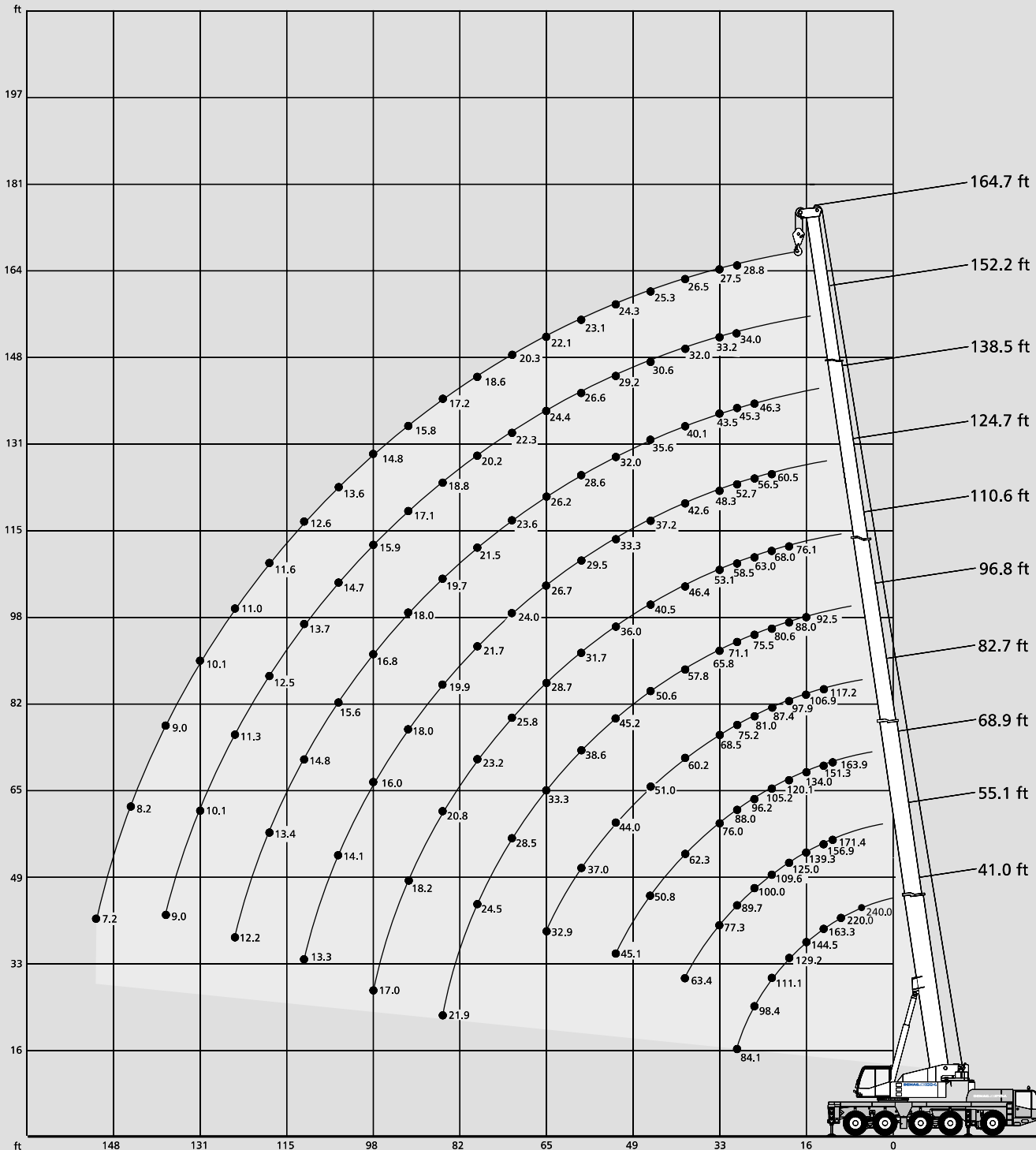


# Working ranges main boom



# Lifting capacities main boom

**70,530 lb**  **25'1" x 24'7"** **360°** **85%**

		Length of main boom										
Radius	ft	41.0	55.1	68.9	82.7	96.8	110.6	124.7	138.5	152.2	164.7	Radius
	ft	1,000 lb										ft
8	240.0 <sup>1+2)</sup>	-	-	-	-	-	-	-	-	-	-	8
10	220.0 <sup>1)</sup>	-	-	-	-	-	-	-	-	-	-	10
10	187.1	-	-	-	-	-	-	-	-	-	-	10
11	178.6	171.4	163.9	-	-	-	-	-	-	-	-	11
13	163.3	156.9	151.3	117.2	-	-	-	-	-	-	-	13
15	150.3	144.6	139.3	110.3	-	-	-	-	-	-	-	15
16	144.5	139.3	134.0	106.9	92.5	-	-	-	-	-	-	16
19	129.2	125.0	120.1	97.9	88.0	76.1	-	-	-	-	-	19
23	111.1	109.6	105.2	87.4	80.6	68.0	60.5	-	-	-	-	23
26	98.4	100.0	96.2	81.0	75.5	63.0	56.5	46.3	-	-	-	26
29	84.1	89.7	88.0	75.2	71.1	58.5	52.7	45.3	34.0	28.8	-	29
33	-	77.3	76.0	68.5	65.8	53.1	48.3	43.5	33.2	27.5	-	33
39	-	63.4	62.3	60.2	57.8	46.4	42.6	40.1	32.0	26.5	-	39
46	-	-	50.8	51.0	50.6	40.5	37.2	35.6	30.6	25.3	-	46
52	-	-	45.1	44.0	45.2	36.0	33.3	32.0	29.2	24.3	-	52
59	-	-	-	37.0	38.6	31.7	29.5	28.6	26.6	23.1	-	59
65	-	-	-	32.9	33.3	28.7	26.7	26.2	24.4	22.1	-	65
72	-	-	-	-	28.5	25.8	24.0	23.6	22.3	20.3	-	72
79	-	-	-	-	24.5	23.2	21.7	21.5	20.2	18.6	-	79
85	-	-	-	-	21.9	20.8	19.9	19.7	18.8	17.2	-	85
92	-	-	-	-	-	18.2	18.0	18.0	17.1	15.8	-	92
98	-	-	-	-	-	17.0	16.0	16.8	15.9	14.8	-	98
105	-	-	-	-	-	-	14.1	15.6	14.7	13.6	-	105
111	-	-	-	-	-	-	13.3	14.8	13.7	12.6	-	111
118	-	-	-	-	-	-	-	13.4	12.5	11.6	-	118
124	-	-	-	-	-	-	-	-	12.2	11.3	-	124
131	-	-	-	-	-	-	-	-	-	10.1**	10.1	131
138	-	-	-	-	-	-	-	-	-	9.0	9.0	138
144	-	-	-	-	-	-	-	-	-	-	8.2	144
151	-	-	-	-	-	-	-	-	-	-	7.2	151
157	-	-	-	-	-	-	-	-	-	-	-	157

**55,100 lb**  **25'1" x 24'7"** **360°** **85%**

		Length of main boom										
Radius	ft	41.0	55.1	68.9	82.7	96.8	110.6	124.7	138.5	152.2	164.7	Radius
	ft	1,000 lb										ft
10	220.0 <sup>1)</sup>	-	-	-	-	-	-	-	-	-	-	10
10	187.1	-	-	-	-	-	-	-	-	-	-	10
11	178.6	171.4	163.9	-	-	-	-	-	-	-	-	11
13	163.3	156.9	151.3	117.2	-	-	-	-	-	-	-	13
15	150.3	144.6	139.3	110.3	-	-	-	-	-	-	-	15
16	144.5	139.3	134.0	106.9	92.5	-	-	-	-	-	-	16
19	129.2	125.0	120.1	97.9	88.0	76.1	-	-	-	-	-	19
23	110.7	109.6	105.2	87.4	80.6	68.0	60.5	-	-	-	-	23
26	96.2	96.1	94.7	81.0	75.5	63.0	56.5	46.3	-	-	-	26
29	83.7	84.8	83.7	75.2	71.1	58.5	52.7	45.3	34.0	28.8	-	29
33	-	72.7	71.6	68.4	65.8	53.1	48.3	43.5	33.2	27.5	-	33
39	-	59.8	58.5	58.8	57.8	46.4	42.6	40.1	32.0	26.5	-	39
46	-	-	49.2	46.8	48.8	40.5	37.2	35.6	30.6	25.3	-	46
52	-	-	40.8	40.5	40.3	36.0	33.3	32.0	29.2	24.3	-	52
59	-	-	-	34.0	32.6	31.7	29.5	28.6	26.6	23.1	-	59
65	-	-	-	29.1	28.0	27.1	26.7	26.2	24.4	22.1	-	65
72	-	-	-	-	25.6	22.7	22.8	23.6	22.3	20.3	-	72
79	-	-	-	-	22.1	21.1	19.3	20.8	20.2	18.6	-	79
85	-	-	-	-	19.7	19.6	17.9	19.2	18.3	17.2	-	85
92	-	-	-	-	-	17.3	16.5	16.7	16.0	15.8	-	92
98	-	-	-	-	-	15.7	15.2	15.1	14.2	14.4	-	98
105	-	-	-	-	-	-	14.1	13.2	13.0**	12.5	-	105
111	-	-	-	-	-	-	12.8	12.4*	11.9**	11.1	-	111
118	-	-	-	-	-	-	-	11.4*	10.6**	9.7	-	118
124	-	-	-	-	-	-	-	9.3	9.5**	8.5	-	124
131	-	-	-	-	-	-	-	-	8.4**	7.5	-	131
138	-	-	-	-	-	-	-	-	6.3	6.3	-	138
144	-	-	-	-	-	-	-	-	-	5.7	-	144
151	-	-	-	-	-	-	-	-	-	5.0	-	151

29,320 lb



25'1" x 24'7"

360°

85%

Length of main boom

Radius	ft	41.0	55.1	68.9	82.7	96.8	110.6	124.7	138.5	152.2	164.7	Radius
ft		1,000 lb										ft
10		220.0 <sup>1)</sup>	-	-	-	-	-	-	-	-	-	10
10		187.1	-	-	-	-	-	-	-	-	-	10
11		178.6	171.4	163.9	-	-	-	-	-	-	-	11
13		163.3	156.9	151.3	117.2	-	-	-	-	-	-	13
15		150.3	144.6	139.3	110.3	-	-	-	-	-	-	15
16		144.5	139.3	134.0	106.9	92.5	-	-	-	-	-	16
19		124.4	123.5	120.1	97.9	88.0	76.1	-	-	-	-	19
23		99.9	100.1	98.8	87.4	80.6	68.0	60.5	-	-	-	23
26		86.6	86.8	83.9	78.9	75.5	63.0	56.5	46.3	-	-	26
29		76.2	76.5	71.5	67.9	66.6	58.5	52.7	45.3	34.0	28.8	29
33		-	61.4	61.9	59.5	55.8	52.1	48.2	43.5	33.2	27.4	33
39		-	45.3	46.7	47.4	41.7	41.2	39.7	39.2	32.0	24.4	39
46		-	-	34.9	35.8	36.7	32.3	31.4	32.3	30.5	19.5	46
52		-	-	28.3	29.0	30.4	28.8	28.4	28.1	26.5	16.3	52
59		-	-	-	23.1	24.5	24.7	25.1	23.6	22.9**	13.2	59
65		-	-	-	19.5	20.6	20.8	21.3	21.1*	20.1**	11.0	65
72		-	-	-	-	17.2	17.5	17.7	17.9*	17.0**	8.8	72
79		-	-	-	-	14.4	14.6	14.9	15.1*	14.2**	7.0	79
85		-	-	-	-	12.6	12.6	12.8	13.1*	12.2**	6.0	85
92		-	-	-	-	-	10.7	10.9	10.9*	10.3**	4.6	92
98		-	-	-	-	-	9.3	9.5	9.5*	8.7**	3.5	98
105		-	-	-	-	-	-	8.1	8.1*	7.2**	2.6	105
111		-	-	-	-	-	-	7.1	7.1*	6.2**	1.8	111
118		-	-	-	-	-	-	-	6.1*	5.3**	-	118
124		-	-	-	-	-	-	-	4.2	4.5**	-	124
131		-	-	-	-	-	-	-	-	3.5**	-	131
138		-	-	-	-	-	-	-	-	1.9	-	138



25,790 lb



25'1" x 24'7"

360°

85%

Length of main boom

Radius	ft	41.0	55.1	68.9	82.7	96.8	110.6	124.7	138.5	152.2	164.7	Radius
ft		1,000 lb										ft
10		220.0 <sup>1)</sup>	-	-	-	-	-	-	-	-	-	10
10		187.1	-	-	-	-	-	-	-	-	-	10
11		178.6	171.4	163.9	-	-	-	-	-	-	-	11
13		163.3	156.9	151.3	117.2	-	-	-	-	-	-	13
15		150.3	144.6	139.3	110.3	-	-	-	-	-	-	15
16		144.5	139.3	134.0	106.9	92.5	-	-	-	-	-	16
19		123.1	122.3	120.1	97.9	88.0	76.1	-	-	-	-	19
23		98.6	98.8	96.6	87.4	80.6	68.0	60.5	-	-	-	23
26		85.7	85.7	80.8	76.3	74.1	63.0	56.5	46.3	-	-	26
29		73.9	74.1	69.9	66.0	64.2	58.5	52.7	45.3	34.0	28.8	29
33		-	58.5	59.4	57.5	53.4	49.9	47.9	43.4	33.2	27.5	33
39		-	43.2	44.5	45.5	42.1	39.4	37.8	37.6	32.0	26.5	39
46		-	-	33.2	34.1	35.6	31.2	31.4	31.9	30.1	25.3	46
52		-	-	26.7	27.6	28.9	28.8	28.4	26.8	25.3	24.3	52
59		-	-	-	21.8	23.1	23.4	23.8	22.9*	22.0**	20.3	59
65		-	-	-	18.2	19.5	19.7	20.0	20.1*	19.0**	17.4	65
72		-	-	-	-	16.1	16.3	16.6	16.8*	15.9**	14.6	72
79		-	-	-	-	13.5	13.5	14.0	14.0*	13.3**	12.2	79
85		-	-	-	-	11.5	11.7	12.0	12.2*	11.3**	10.2	85
92		-	-	-	-	-	9.8	10.1	10.3*	9.4**	8.3	92
98		-	-	-	-	-	8.4	8.6	8.9*	8.0**	6.9	98
105		-	-	-	-	-	-	7.4	7.4*	6.6**	5.7	105
111		-	-	-	-	-	-	6.4	6.4*	5.6**	4.7	111
118		-	-	-	-	-	-	-	5.5*	4.6**	3.5	118
124		-	-	-	-	-	-	-	3.6	3.8**	2.9	124
131		-	-	-	-	-	-	-	-	3.1**	2.0	131
138		-	-	-	-	-	-	-	-	1.3	1.3	138

Remarks

<sup>1)</sup> over rear  
\* Length of main boom 133.9 ft

<sup>2)</sup> with added equipment  
\*\* Length of main boom 147.6 ft

# Lifting capacities main boom

**4,400 lb**   **25'1" x 24'7"** **360°** **85%**

Radius	Length of main boom											Radius	
	ft	41.0	55.1	68.9	82.7	96.8	110.6	124.7	138.5	152.2	164.7		ft
		1,000 lb											
10	220.0 <sup>1)</sup>	-	-	-	-	-	-	-	-	-	-	10	
10	187.1	-	-	-	-	-	-	-	-	-	-	10	
11	178.6	171.4	163.9	-	-	-	-	-	-	-	-	11	
13	163.3	156.9	151.3	117.2	-	-	-	-	-	-	-	13	
15	148.5	144.2	137.7	110.3	-	-	-	-	-	-	-	15	
16	137.8	136.8	125.5	106.9	93.7	-	-	-	-	-	-	16	
19	112.6	107.6	95.6	86.0	80.0	71.4	-	-	-	-	-	19	
23	75.1	75.6	72.3	68.6	61.3	54.7	50.1	-	-	-	-	23	
26	56.8	57.2	58.8	56.9	54.8	45.1	41.7	40.6	-	-	-	26	
29	44.9	45.2	47.0	47.8	46.8	42.0	39.6	36.7	33.8	28.8	-	29	
33	-	34.0	35.8	37.1	38.2	36.3	34.8	33.7*	28.5**	27.1	-	33	
39	-	23.5	25.1	26.0	27.5	27.6	27.1	26.4*	23.8**	21.0	-	39	
46	-	-	17.3	18.2	19.7	20.0	20.4	20.4*	18.4**	16.0	-	46	
52	-	-	13.3	14.2	15.3	15.5	16.0	16.2*	14.8**	12.8	-	52	
59	-	-	-	10.6	11.7	11.9	12.3	12.3*	11.7**	9.9	-	59	
65	-	-	-	8.3	9.4	9.7	9.9	10.1*	9.4**	7.9	-	65	
72	-	-	-	-	7.5	7.5	7.9	7.9*	7.3**	5.7	-	72	
79	-	-	-	-	5.6	5.8	6.3	6.3*	5.4**	4.1	-	79	
85	-	-	-	-	4.4	4.4	4.9	5.1*	4.2**	3.1	-	85	
92	-	-	-	-	-	3.2	3.7	3.7*	2.8**	1.7	-	92	
98	-	-	-	-	-	2.4	2.7	2.7*	1.8**	-	-	98	
105	-	-	-	-	-	-	1.7	1.7*	-	-	-	105	
111	-	-	-	-	-	-	-	-	-	-	-	111	

**0 lb**   **25'1" x 24'7"** **360°** **85%**

Radius	Length of main boom											Radius	
	ft	41.0	55.1	68.9	82.7	96.8	110.6	124.7	138.5	152.2	164.7		ft
		1,000 lb											
10	220.0 <sup>1)</sup>	-	-	-	-	-	-	-	-	-	-	10	
10	187.1	-	-	-	-	-	-	-	-	-	-	10	
11	178.6	171.4	163.9	-	-	-	-	-	-	-	-	11	
13	163.3	156.9	151.3	117.2	-	-	-	-	-	-	-	13	
15	145.9	143.2	129.8	109.4	-	-	-	-	-	-	-	15	
16	135.4	131.6	116.6	102.4	94.5	-	-	-	-	-	-	16	
19	106.4	98.9	87.9	82.3	74.8	65.0	-	-	-	-	-	19	
23	68.8	68.8	65.5	62.2	58.9	48.4	44.4	-	-	-	-	23	
26	51.8	52.2	53.4	51.1	49.7	44.0	39.6	37.8	-	-	-	26	
29	40.6	40.9	42.8	42.4	41.9	39.0	36.9	35.0*	29.7	28.4	-	29	
33	-	30.1	31.8	32.9	33.8	32.1	30.8	29.9*	26.9**	23.6	-	33	
39	-	20.6	21.9	23.0	24.6	24.7	24.0	23.3*	20.8**	18.1	-	39	
46	-	-	15.1	16.0	17.3	17.5	18.0	17.8*	15.8**	13.6	-	46	
52	-	-	11.3	12.2	13.3	13.7	14.0	14.1*	12.6**	10.6	-	52	
59	-	-	-	8.8	10.1	10.3	10.6	10.8*	9.7**	7.9	-	59	
65	-	-	-	6.8	8.1	8.1	8.5	8.6*	7.9**	6.1	-	65	
72	-	-	-	-	6.0	6.2	6.6	6.6*	6.0**	4.2	-	72	
79	-	-	-	-	4.3	4.5	4.7	5.0*	4.1**	2.6	-	79	
85	-	-	-	-	3.1	3.3	3.5	3.8*	2.9**	1.5	-	85	
92	-	-	-	-	-	2.1	2.4	2.6*	1.7**	-	-	92	
98	-	-	-	-	-	1.3	1.6	1.6*	-	-	-	98	

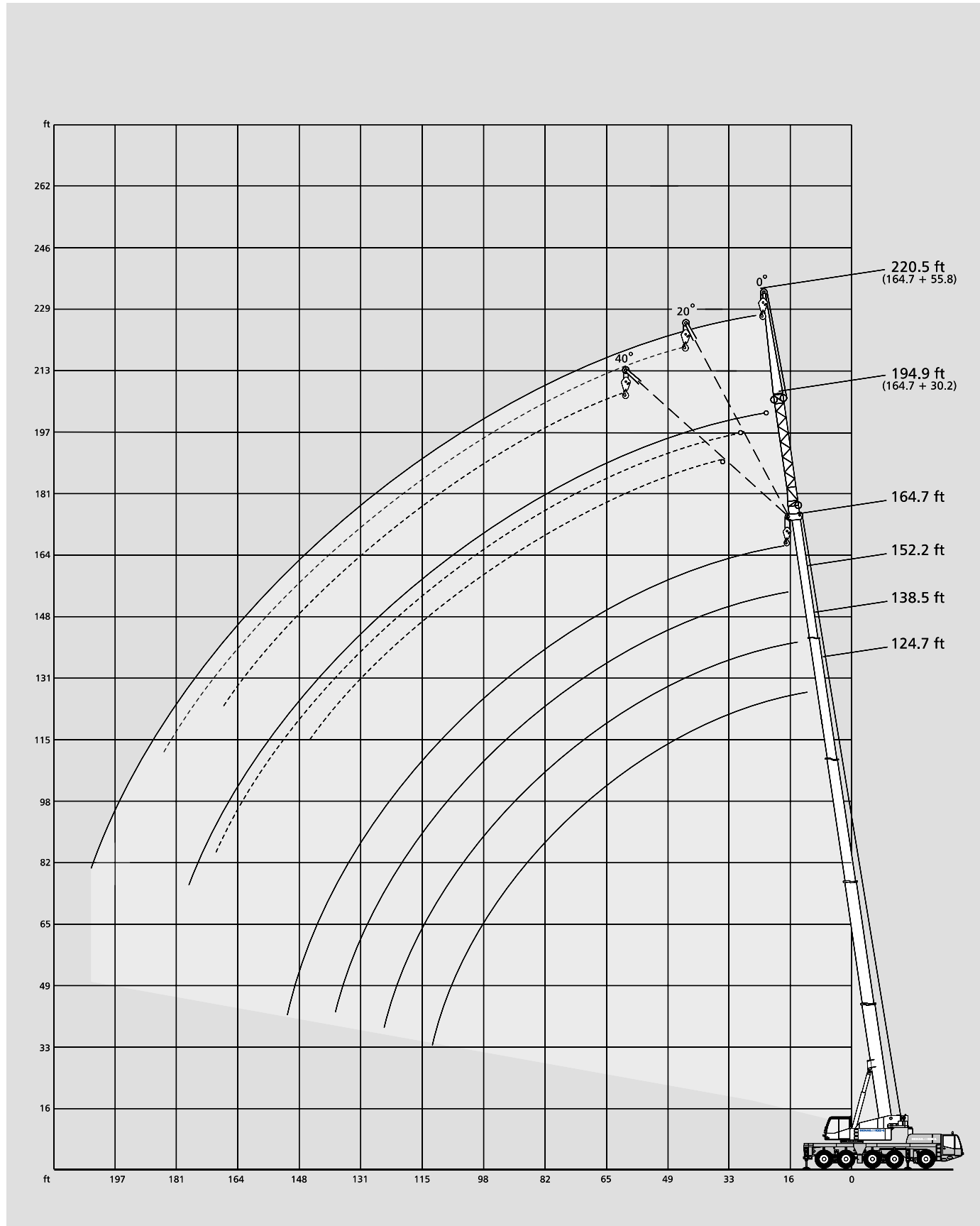
## Remarks

<sup>1)</sup> over rear

\* Length of main boom 133.9 ft

\*\* Length of main boom 147.6 ft

# Working ranges main boom extension



# Lifting capacities main boom extension

70,530 lb



25'1" x 24'7"

360°

85%

## 124.7 ft Main boom

Radius ft	30.2 ft			55.8 ft		
	0°	20°	40°	0°	20°	40°
	1,000 lb					
23	31.7	-	-	-	-	-
26	31.3	-	-	17.9	-	-
29	30.3	-	-	17.3	-	-
33	28.8	20.4	-	16.5	-	-
39	27.0	19.6	-	15.4	-	-
46	24.8	18.9	15.6	14.3	10.5	-
52	23.0	18.3	15.4	13.3	10.1	-
59	21.3	17.6	14.9	12.3	9.4	7.9
65	19.9	17.0	14.5	11.7	9.0	7.7
72	18.3	16.5	14.3	11.0	8.6	7.5
79	16.9	15.6	14.1	10.3	8.1	7.2
85	15.7	15.0	13.8	9.7	7.9	7.0
92	14.3	14.0	13.6	9.2	7.4	6.8
98	13.0	13.2	13.4	8.8	7.2	6.6
105	11.9	12.1	12.7	8.3	7.0	6.6
111	10.8	11.3	12.1	7.9	6.8	6.4
118	9.9	10.1	-	7.7	6.8	6.3
124	9.1	9.3	-	7.3	6.6	6.3
131	8.4	8.6	-	7.0	6.6	6.3
138	7.6	7.9	-	6.6	6.3	6.3
144	-	-	-	6.4	6.1	-
151	-	-	-	6.1	6.1	-
157	-	-	-	5.7	5.9	-
164	-	-	-	5.2	5.5	-
170	-	-	-	-	-	-
177	-	-	-	-	-	-
184	-	-	-	-	-	-

## 138.5 ft Main boom

Radius ft	30.2 ft			55.8 ft		
	0°	20°	40°	0°	20°	40°
	1,000 lb					
23	-	-	-	-	-	-
26	-	-	-	-	-	-
29	25.9	-	-	15.9	-	-
33	24.8	-	-	15.4	-	-
39	23.6	19.4	-	14.3	-	-
46	22.0	18.5	15.6	13.4	-	-
52	20.6	17.9	15.2	12.6	9.9	-
59	19.1	17.2	14.7	11.6	9.4	-
65	17.9	16.5	14.3	11.0	9.0	7.5
72	16.5	15.8	14.1	10.3	8.6	7.2
79	15.3	15.1	13.6	9.8	8.1	7.0
85	14.3	14.5	13.2	9.2	7.9	6.8
92	13.2	13.6	12.9	8.8	7.4	6.6
98	12.4	13.0	12.5	8.4	7.2	6.4
105	11.4	12.1	12.1	8.1	7.0	6.3
111	10.6	11.3	11.7	7.7	6.8	6.3
118	9.9	10.3	11.0	7.4	6.8	6.1
124	9.3	9.3	10.2	7.1	6.8	6.1
131	8.4	8.4	-	6.8	6.8	6.1
138	7.9	7.9	-	6.6	6.8	6.1
144	7.5	7.7	-	6.4	6.8	6.4
151	7.2	7.4	-	5.9	6.6	6.1
157	-	-	-	5.7	6.2	-
164	-	-	-	5.2	5.5	-
170	-	-	-	4.8	4.7	-
177	-	-	-	4.4	-	-
184	-	-	-	-	-	-

## 152.2 ft Main boom

Radius ft	30.2 ft			55.8 ft		
	0°	20°	40°	0°	20°	40°
	1,000 lb					
29	-	-	-	-	-	-
33	22.6	-	-	14.0**	-	-
39	20.8	-	-	13.7	-	-
46	19.1	15.6	-	12.7	-	-
52	17.9	15.0	13.4	12.1	9.5**	-
59	16.5	14.3	12.7	11.4	9.0	-
65	15.5	13.7	12.1	10.8	8.8	-
72	14.3	12.8	11.4	10.3	8.3	7.0
79	13.4	12.0	11.0	9.6	7.9	6.8
85	12.6	11.4	10.6	9.2	7.7	6.8
92	11.8	11.0	10.1	8.8	7.2	6.6
98	11.2	10.4	9.7	8.4	7.0	6.6
105	10.5	9.9	9.2	7.9	6.6	6.3
111	9.9	9.3	9.0	7.7	6.4	6.3
118	9.2	8.8	8.6	7.2	6.1	6.1
124	8.6	8.4	8.4	7.0	5.9	5.9
131	8.1	7.9	7.9	6.8	5.7	5.7
138	7.7**	7.4	7.4	6.3	5.7	5.5
144	7.2**	7.2**	-	6.1	5.5	5.5
151	7.0**	7.0**	-	5.9	5.5	5.2
157	6.8**	6.8**	-	5.7	5.3	5.2
164	5.2	5.5	-	5.2	5.0	-
170	-	-	-	5.0	4.8	-
177	-	-	-	4.4	4.6	-
184	-	-	-	4.4**	4.1	-
190	-	-	-	3.5	-	-
197	-	-	-	-	-	-

## 164.7 ft Main boom

Radius ft	30.2 ft			55.8 ft		
	0°	20°	40°	0°	20°	40°
	1,000 lb					
39	18.5	-	-	12.3	-	-
46	17.4	15.2	-	11.9	-	-
52	16.6	14.1	-	11.4	-	-
59	15.6	13.4	12.1	11.0	9.0	-
65	14.8	12.6	11.5	10.6	8.6	-
72	13.9	11.9	11.0	10.1	8.3	7.0
79	13.2	11.4	10.5	9.6	7.9	6.8
85	12.5	10.8	10.1	9.2	7.5	6.6
92	11.8	10.3	9.6	8.8	7.2	6.3
98	11.0	9.9	9.2	8.4	6.8	6.3
105	10.3	9.4	9.0	7.9	6.6	6.1
111	9.7	9.0	8.8	7.5	6.4	5.9
118	9.0	8.6	8.3	7.0	6.1	5.9
124	8.4	8.2	8.1	6.6	5.9	5.7
131	7.7	7.7	7.7	6.1	5.7	5.5
138	7.0	7.0	7.4	5.9	5.5	5.5
144	6.4	6.4	7.0	5.5	5.3	5.3
151	5.9	5.9	-	5.2	5.0	5.0
157	5.3	5.5	-	5.0	5.0	4.8
164	4.8	4.8	-	4.8	4.8	4.8
170	4.4	4.4	-	4.4	4.6	4.6
177	3.9	-	-	4.1	4.4	-
184	-	-	-	3.7	4.1	-
190	-	-	-	3.3	-	-
197	-	-	-	2.8	-	-
203	-	-	-	2.4	-	-
216	-	-	-	-	-	-

### Remarks

\* Length of main boom 133.9 ft

\*\* Length of main boom 147.6 ft

55,100 lb



25'1" x 24'7"

360°

85%

124.7 ft Main boom

Radius ft	30.2 ft			Extension			55.8 ft		
	0°	20°	40°	0°	20°	40°	0°	20°	40°
	1,000 lb								
23	31.7	-	-	-	-	-	-	-	-
26	31.3	-	-	17.9	-	-	-	-	-
29	30.3	-	-	17.3	-	-	-	-	-
33	28.8	20.4	-	16.5	-	-	-	-	-
39	27.0	19.6	-	15.4	-	-	-	-	-
46	24.8	18.9	15.6	14.3	10.5	-	-	-	-
52	23.0	18.3	15.4	13.3	10.1	-	-	-	-
59	21.3	17.6	14.9	12.3	9.4	7.9	-	-	-
65	19.9	17.0	14.5	11.7	9.0	7.7	-	-	-
72	18.3	16.5	14.3	11.0	8.6	7.5	-	-	-
79	16.9	15.6	14.1	10.3	8.1	7.2	-	-	-
85	15.7	15.0	13.8	9.7	7.9	7.0	-	-	-
92	14.3	14.0	13.6	9.2	7.4	6.8	-	-	-
98	13.0	13.2	13.4	8.8	7.2	6.6	-	-	-
105	11.2	11.9	12.3	8.3	7.0	6.6	-	-	-
111	9.8	10.4	10.7	7.9	6.8	6.4	-	-	-
118	8.6	8.8	-	7.7	6.8	6.3	-	-	-
124	8.2	7.9	-	7.3	6.6	6.3	-	-	-
131	7.9	7.7	-	7.0	6.6	6.3	-	-	-
138	7.4	7.4	-	6.1	6.3	6.3	-	-	-
144	-	-	-	5.3	5.9	-	-	-	-
151	-	-	-	4.8	5.0	-	-	-	-
157	-	-	-	4.6	4.6	-	-	-	-
164	-	-	-	4.4	4.4	-	-	-	-
170	-	-	-	-	-	-	-	-	-
177	-	-	-	-	-	-	-	-	-
184	-	-	-	-	-	-	-	-	-

138.5 ft Main boom

Radius ft	30.2 ft			Extension			55.8 ft		
	0°	20°	40°	0°	20°	40°	0°	20°	40°
	1,000 lb								
23	-	-	-	-	-	-	-	-	-
26	-	-	-	-	-	-	-	-	-
29	25.9	-	-	15.9	-	-	-	-	-
33	24.8	-	-	15.4	-	-	-	-	-
39	23.6	19.4	-	14.3	-	-	-	-	-
46	22.0	18.5	15.6	13.4	-	-	-	-	-
52	20.6	17.9	15.2	12.6	9.9	-	-	-	-
59	19.1	17.2	14.7	11.6	9.4	-	-	-	-
65	17.9	16.5	14.3	11.0	9.0	7.5	-	-	-
72	16.5	15.8	14.1	10.3	8.6	7.2	-	-	-
79	15.3	15.1	13.6	9.8	8.1	7.0	-	-	-
85	14.3	14.5	13.2	9.2	7.9	6.8	-	-	-
92	13.2	13.6	12.9	8.8	7.4	6.8	-	-	-
98	12.4	13.0	12.5	8.4	7.2	6.6	-	-	-
105	11.4	12.1	12.1	8.1	7.0	6.3	-	-	-
111	10.2	10.9	11.3	7.7	6.8	6.3	-	-	-
118	9.0	9.5	9.7	7.4	6.8	6.1	-	-	-
124	8.6	8.4	8.5	7.1	6.8	6.1	-	-	-
131	7.9	8.1	-	6.8	6.8	6.1	-	-	-
138	7.2*	7.2	-	6.3	6.8	6.1	-	-	-
144	6.8*	6.8*	-	5.5	6.4	6.1	-	-	-
151	5.2	5.5	-	5.2	5.5	5.9	-	-	-
157	-	-	-	5.0	5.0	-	-	-	-
164	-	-	-	4.6	4.8	-	-	-	-
170	-	-	-	4.2*	4.4	-	-	-	-
177	-	-	-	3.5	-	-	-	-	-
184	-	-	-	-	-	-	-	-	-

152.2 ft Main boom

Radius ft	30.2 ft			Extension			55.8 ft		
	0°	20°	40°	0°	20°	40°	0°	20°	40°
	1,000 lb								
29	-	-	-	-	-	-	-	-	-
33	22.6	-	-	14.0**	-	-	-	-	-
39	20.8	-	-	13.7	-	-	-	-	-
46	19.1	15.6	-	12.7	-	-	-	-	-
52	17.9	15.0	13.4	12.1	9.5**	-	-	-	-
59	16.5	14.3	12.7	11.4	9.0	-	-	-	-
65	15.5	13.7	12.1	10.8	8.8	-	-	-	-
72	14.3	12.8	11.4	10.3	8.3	7.0	-	-	-
79	13.4	12.0	11.0	9.6	7.9	6.8	-	-	-
85	12.6	11.4	10.6	9.2	7.7	6.8	-	-	-
92	11.8	11.0	10.1	8.8	7.2	6.6	-	-	-
98	11.2	10.4	9.7	8.4	7.0	6.6	-	-	-
105	10.5	9.9	9.2	7.9	6.6	6.3	-	-	-
111	9.9	9.3	9.0	7.7	6.4	6.3	-	-	-
118	9.2	8.8	8.6	7.2	6.1	6.1	-	-	-
124	8.4**	8.4	8.4	7.0	5.9	5.9	-	-	-
131	7.9**	7.7**	7.7	6.8	5.7	5.7	-	-	-
138	6.8**	7.2**	6.5	6.3	5.7	5.5	-	-	-
144	6.2**	6.4**	-	5.7	5.5	5.5	-	-	-
151	5.2**	5.5**	-	5.0	5.5	5.2	-	-	-
157	4.6**	4.8**	-	4.8**	5.1	5.2	-	-	-
164	-	3.3	-	4.4**	4.4**	-	-	-	-
170	-	-	-	3.8**	4.2**	-	-	-	-
177	-	-	-	3.3**	3.7**	-	-	-	-
184	-	-	-	2.8**	3.0**	-	-	-	-
190	-	-	-	1.7	-	-	-	-	-
197	-	-	-	-	-	-	-	-	-

164.7 ft Main boom

Radius ft	30.2 ft			Extension			55.8 ft		
	0°	20°	40°	0°	20°	40°	0°	20°	40°
	1,000 lb								
29	-	-	-	-	-	-	-	-	-
33	-	-	-	-	-	-	-	-	-
39	18.5	-	-	12.3	-	-	-	-	-
46	17.4	15.2	-	11.9	-	-	-	-	-
52	16.6	14.1	-	11.4	-	-	-	-	-
59	15.6	13.4	12.1	11.0	9.0	-	-	-	-
65	14.8	12.6	11.5	10.6	8.6	-	-	-	-
72	13.9	11.9	11.0	10.1	8.3	7.0	-	-	-
79	13.2	11.4	10.5	9.6	7.9	6.8	-	-	-
85	12.5	10.8	10.1	9.2	7.5	6.6	-	-	-
92	11.8	10.3	9.6	8.8	7.2	6.3	-	-	-
98	11.0	9.9	9.2	8.4	6.8	6.3	-	-	-
105	10.3	9.4	9.0	7.9	6.6	6.1	-	-	-
111	9.7	9.0	8.8	7.5	6.4	5.9	-	-	-
118	9.0	8.6	8.3	7.0	6.1	5.9	-	-	-
124	8.0	8.2	8.1	6.6	5.9	5.7	-	-	-
131	6.8	7.5	7.7	6.1	5.7	5.5	-	-	-
138	5.9	6.3	6.5	5.9	5.5	5.5	-	-	-
144	5.1	5.5	5.7	5.5	5.3	5.3	-	-	-
151	4.4	4.6	-	4.8	5.0	5.0	-	-	-
157	3.7	4.0	-	4.2	4.8	4.8	-	-	-
164	3.0	3.3	-	3.5	4.1	4.6	-	-	-
170	2.4	2.7	-	2.9	3.5	3.8	-	-	-
177	1.9	-	-	2.4	2.8	-	-	-	-
184	-	-	-	1.7	2.1	-	-	-	-
190	-	-	-	1.3	-	-	-	-	-
197	-	-	-	-	-	-	-	-	-

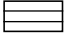
Remarks

\* Length of main boom 133.9 ft

\*\* Length of main boom 147.6 ft



# Lifting capacities main boom extension

29,320 lb  25'1" x 24'7" 360° 85%

124.7 ft Main boom							
Radius ft	30.2 ft Extension			55.8 ft Extension			1,000 lb
	0°	20°	40°	0°	20°	40°	
	23	31.7	-	-	-	-	
26	31.3	-	-	17.9	-	-	
29	30.3	-	-	17.3	-	-	
33	28.8	20.4	-	16.5	-	-	
39	27.0	19.6	-	15.4	-	-	
46	24.8	18.9	15.6	14.3	10.5	-	
52	23.0	18.3	15.4	13.3	10.1	-	
59	20.7	17.6	14.9	12.3	9.4	7.9	
65	17.7	17.0	14.5	11.7	9.0	7.7	
72	14.6	15.9	14.3	11.0	8.6	7.5	
79	12.3	13.3	14.0	10.3	8.1	7.2	
85	11.7	11.1	12.0	9.7	7.9	7.0	
92	10.7	9.6	9.8	9.2	7.4	6.8	
98	9.5	9.2	9.2	7.8	7.2	6.6	
105	8.1	8.5	8.8	7.0	7.0	6.6	
111	6.9	7.5	7.8	6.6	6.4	6.4	
118	5.9	6.1	-	6.3	5.9	6.1	
124	5.1	5.3	-	5.6	5.7	5.7	
131	4.2	4.4	-	4.8	5.3	5.5	
138	3.5	3.7	-	3.9	4.6	5.0	
144	-	-	-	3.3	4.0	-	
151	-	-	-	2.8	3.2	-	
157	-	-	-	2.2	2.6	-	
164	-	-	-	1.7	1.9	-	
170	-	-	-	-	-	-	

138.5 ft Main boom							
Radius ft	30.2 ft Extension			55.8 ft Extension			1,000 lb
	0°	20°	40°	0°	20°	40°	
	23	-	-	-	-	-	
26	-	-	-	-	-	-	
29	25.9	-	-	15.9	-	-	
33	24.8	-	-	15.4	-	-	
39	23.6	19.4	-	14.3	-	-	
46	22.0	18.5	15.6	13.4	-	-	
52	20.6	17.9	15.2	12.6	9.9	-	
59	19.1	17.2	14.7	11.6	9.4	-	
65	17.5	16.5	14.3	11.0	9.0	7.5	
72	14.8	15.8	14.1	10.3	8.6	7.2	
79	12.7	13.5	13.6	9.8	8.1	7.0	
85	11.9	11.7	12.6	9.2	7.9	6.8	
92	10.3*	10.5	10.3	8.8	7.4	6.8	
98	9.5*	9.3	9.5	8.1	7.2	6.6	
105	7.9*	7.7	8.5*	7.7	7.0	6.3	
111	6.9*	7.5*	7.7*	6.7	6.8	6.3	
118	5.7*	6.1*	6.6*	6.1*	6.3	6.1	
124	4.9*	5.3*	5.6*	5.5*	5.6	5.9	
131	4.2*	4.4*	-	4.6*	5.2*	5.3	
138	3.2*	3.7*	-	3.9*	4.6*	5.0*	
144	2.8*	2.9*	-	3.3*	3.7*	4.2*	
151	-	1.5	-	2.6*	3.0*	-	
157	-	-	-	2.2*	2.6*	-	
164	-	-	-	1.5*	1.9*	-	
170	-	-	-	-	1.5*	-	

152.2 ft Main boom							
Radius ft	30.2 ft Extension			55.8 ft Extension			1,000 lb
	0°	20°	40°	0°	20°	40°	
	29	-	-	-	-	-	
33	22.6	-	-	14.0**	-	-	
39	20.8	-	-	13.7	-	-	
46	19.1	15.6	-	12.7	-	-	
52	17.9	15.0	13.4	12.1	9.5**	-	
59	16.5	14.3	12.7	11.4	9.0	-	
65	15.5	13.7	12.1	10.8	8.8	-	
72	14.3	12.8	11.4	10.3	8.3	7.0	
79	12.7	12.0	11.0	9.6	7.9	6.8	
85	11.2**	11.4	10.6	9.2	7.7	6.8	
92	10.1**	10.1	10.1	8.8	7.2	6.6	
98	8.4**	9.2**	9.1	8.2	7.0	6.6	
105	7.0**	7.7**	8.3**	7.4**	6.6	6.3	
111	6.0**	6.7**	7.1**	6.4**	6.4	6.3	
118	4.8**	5.5**	5.7**	5.5**	5.9	6.1	
124	4.0**	4.5**	4.9**	4.5**	5.5**	5.7	
131	3.1**	3.5**	3.7**	3.7**	4.6**	5.2**	
138	2.4**	2.8**	2.1	2.8**	3.7**	4.3**	
144	1.8**	2.2**	-	2.2**	3.1**	3.5**	
151	-	1.5**	-	1.7**	2.4**	2.8**	
157	-	-	-	-	1.8**	2.2**	

164.7 ft Main boom							
Radius ft	30.2 ft Extension			55.8 ft Extension			1,000 lb
	0°	20°	40°	0°	20°	40°	
	29	-	-	-	-	-	
33	-	-	-	-	-	-	
39	18.5	-	-	12.3	-	-	
46	17.4	15.2	-	11.9	-	-	
52	16.6	14.1	-	11.4	-	-	
59	15.6	13.4	12.1	11.0	9.0	-	
65	14.8	12.6	11.5	10.6	8.6	-	
72	13.9	11.9	11.0	10.1	8.3	7.0	
79	12.2	11.4	10.5	9.6	7.9	6.8	
85	10.6	10.8	10.1	9.2	7.5	6.6	
92	8.7	9.8	9.6	8.7	7.2	6.3	
98	7.3	8.4	9.0	7.5	6.8	6.3	
105	5.9	6.8	7.4	6.3	6.6	6.1	
111	4.9	5.8	6.2	5.3	6.4	5.9	
118	3.7	4.6	5.0	4.2	5.5	5.9	
124	2.9	3.6	4.0	3.5	4.7	5.5	
131	2.2	2.6	3.1	2.6	3.7	4.6	
138	1.2	1.9	2.1	1.9	2.8	3.7	
144	-	-	1.5	-	2.2	2.9	
151	-	-	-	-	1.5	2.1	
157	-	-	-	-	-	1.3	

## Remarks

\* Length of main boom 133.9 ft

\*\* Length of main boom 147.6 ft



25,790 lb



25'1" x 24'7"

360°

85%

124.7 ft Main boom

Radius ft	30.2 ft			Extension			55.8 ft		
	0°	20°	40°	0°	20°	40°	0°	20°	40°
	1,000 lb								
23	31.7	-	-	-	-	-	-	-	-
26	31.3	-	-	17.9	-	-	-	-	-
29	30.3	-	-	17.3	-	-	-	-	-
33	28.8	20.4	-	16.5	-	-	-	-	-
39	27.0	19.6	-	15.4	-	-	-	-	-
46	24.8	18.9	15.6	14.3	10.5	-	-	-	-
52	23.0	18.3	15.4	13.3	10.1	-	-	-	-
59	19.4	17.6	14.9	12.3	9.4	7.9	-	-	-
65	16.6	17.0	14.5	11.7	9.0	7.7	-	-	-
72	13.5	15.0	14.3	11.0	8.6	7.5	-	-	-
79	12.3	12.2	13.3	10.3	8.1	7.2	-	-	-
85	11.7	10.3	11.1	9.7	7.9	7.0	-	-	-
92	10.1	9.6	9.6	8.3	7.4	6.8	-	-	-
98	8.6	9.2	9.2	7.5	7.2	6.6	-	-	-
105	7.2	7.9	8.1	7.0	7.0	6.6	-	-	-
111	6.2	6.7	6.9	6.6	6.1	6.4	-	-	-
118	5.0	5.5	-	5.7	5.9	5.9	-	-	-
124	4.2	4.7	-	4.9	5.7	5.7	-	-	-
131	3.5	3.7	-	4.2	4.8	5.3	-	-	-
138	2.8	3.0	-	3.2	3.9	4.3	-	-	-
144	-	-	-	2.8	3.3	-	-	-	-
151	-	-	-	2.1	2.6	-	-	-	-
157	-	-	-	1.7	2.0	-	-	-	-
164	-	-	-	-	1.5	-	-	-	-
170	-	-	-	-	-	-	-	-	-

138.5 ft Main boom

Radius ft	30.2 ft			Extension			55.8 ft		
	0°	20°	40°	0°	20°	40°	0°	20°	40°
	1,000 lb								
23	-	-	-	-	-	-	-	-	-
26	-	-	-	-	-	-	-	-	-
29	25.9	-	-	15.9	-	-	-	-	-
33	24.8	-	-	15.4	-	-	-	-	-
39	23.6	19.4	-	14.3	-	-	-	-	-
46	22.0	18.5	15.6	13.4	-	-	-	-	-
52	20.6	17.9	15.2	12.6	9.9	-	-	-	-
59	19.1	17.2	14.7	11.6	9.4	-	-	-	-
65	16.5	16.5	14.3	11.0	9.0	7.5	-	-	-
72	13.9	15.2	14.1	10.3	8.6	7.2	-	-	-
79	12.7	12.7	13.5	9.8	8.1	7.0	-	-	-
85	11.1	11.0	11.5	9.2	7.9	6.8	-	-	-
92	10.1*	9.8	9.9	8.5	7.4	6.8	-	-	-
98	8.6*	9.0*	9.0	8.1	7.2	6.6	-	-	-
105	7.2*	7.9*	8.3*	7.0*	7.0	6.3	-	-	-
111	6.2*	6.7*	7.1*	6.6*	6.6	6.3	-	-	-
118	5.0*	5.5*	5.7*	5.7*	5.9	6.1	-	-	-
124	4.2*	4.7*	4.9*	4.9*	5.5*	5.7	-	-	-
131	3.5*	3.7*	-	4.0*	4.8*	5.2*	-	-	-
138	2.8*	3.0*	-	3.2*	3.9*	4.3*	-	-	-
144	2.2*	2.4*	-	2.6*	3.3*	3.7*	-	-	-
151	-	-	-	1.9*	2.6*	2.1	-	-	-
157	-	-	-	1.5*	2.0*	-	-	-	-
164	-	-	-	-	1.5*	-	-	-	-
170	-	-	-	-	-	-	-	-	-

152.2 ft Main boom

Radius ft	30.2 ft			Extension			55.8 ft		
	0°	20°	40°	0°	20°	40°	0°	20°	40°
	1,000 lb								
33	22.6	-	-	14.0**	-	-	-	-	-
39	20.8	-	-	13.7	-	-	-	-	-
46	19.1	15.6	-	12.7	-	-	-	-	-
52	17.9	15.0	13.4	12.1	9.5**	-	-	-	-
59	16.5	14.3	12.7	11.4	9.0	-	-	-	-
65	15.5	13.7	12.1	10.8	8.8	-	-	-	-
72	13.9	12.8	11.4	10.3	8.3	7.0	-	-	-
79	11.8	12.0	11.0	9.6	7.9	6.8	-	-	-
85	10.8**	11.0	10.6	9.2	7.7	6.8	-	-	-
92	9.0**	9.6**	9.8	8.5	7.2	6.6	-	-	-
98	7.5**	8.4**	9.0**	7.9**	7.0	6.6	-	-	-
105	6.1**	7.0**	7.4**	6.8**	6.6	6.3	-	-	-
111	5.1**	5.8**	6.2**	5.8**	6.2	6.3	-	-	-
118	4.2**	4.6**	5.0**	4.6**	5.9**	6.1	-	-	-
124	3.3**	3.8**	4.0**	3.8**	4.9**	5.5**	-	-	-
131	2.4**	2.8**	3.1**	3.1**	4.0**	4.6**	-	-	-
138	1.7**	2.1**	1.5	2.4**	3.2**	3.7**	-	-	-
144	-	1.5**	-	1.8**	2.4**	3.1**	-	-	-
151	-	-	-	-	1.7**	2.1**	-	-	-
157	-	-	-	-	-	1.5**	-	-	-
164	-	-	-	-	-	-	-	-	-

164.7 ft Main boom

Radius ft	30.2 ft			Extension			55.8 ft		
	0°	20°	40°	0°	20°	40°	0°	20°	40°
	1,000 lb								
33	-	-	-	-	-	-	-	-	-
39	18.5	-	-	12.3	-	-	-	-	-
46	17.4	15.2	-	11.9	-	-	-	-	-
52	16.6	14.1	-	11.4	-	-	-	-	-
59	15.6	13.4	12.1	11.0	9.0	-	-	-	-
65	14.8	12.6	11.5	10.6	8.6	-	-	-	-
72	13.4	11.9	11.0	10.1	8.3	7.0	-	-	-
79	11.3	11.4	10.5	9.6	7.9	6.8	-	-	-
85	9.5	10.6	10.1	9.2	7.5	6.6	-	-	-
92	7.6	8.7	9.6	7.9	7.2	6.3	-	-	-
98	6.4	7.3	8.0	6.7	6.8	6.3	-	-	-
105	5.0	5.9	6.6	5.5	6.6	6.1	-	-	-
111	4.0	4.9	5.6	4.5	5.8	5.9	-	-	-
118	3.1	3.7	4.2	3.5	4.8	5.9	-	-	-
124	2.2	2.9	3.3	2.7	3.8	4.9	-	-	-
131	1.5	2.0	2.4	2.0	3.1	4.0	-	-	-
138	-	-	1.5	1.3	2.3	3.0	-	-	-
144	-	-	-	-	1.5	2.2	-	-	-
151	-	-	-	-	-	1.5	-	-	-
157	-	-	-	-	-	-	-	-	-
164	-	-	-	-	-	-	-	-	-

Remarks

\* Length of main boom 133.9 ft                      \*\* Length of main boom 147.6 ft



# Lifting capacities main boom extension

70,530 lb   25'1" x 24'7" 360° 85%

152.2 ft Main boom							
Radius ft	82.0 ft*			108.3 ft*			1,000 lb
	Extension						
	0°	20°	40°	0°	20°	40°	
39	9.2	-	-	-	-	-	-
46	9.2	-	-	5.5	-	-	-
52	9.2	-	-	5.5	-	-	-
59	9.2	-	-	5.5	-	-	-
65	9.0	8.6	-	5.5	-	-	-
72	9.0	8.3	-	5.5	5.2	-	-
79	8.8	8.1	7.0	5.5	5.2	-	-
85	8.6	7.7	7.0	5.5	5.2	5.0	-
92	8.3	7.4	6.8	5.5	5.2	5.0	-
98	8.3	7.2	6.8	5.5	5.2	5.0	-
105	7.9	7.0	6.6	5.5	5.2	4.8	-
111	7.5	6.8	6.4	5.5	5.0	4.6	-
118	7.2	6.6	6.3	5.2	4.8	4.4	-
124	6.8	6.4	6.1	5.0	4.6	4.4	-
131	6.6	6.1	5.9	4.8	4.4	4.1	-
138	6.1	5.7	5.7	4.4	4.1	3.9	-
144	5.9	5.5	5.5	4.2	3.9	3.7	-
151	5.5	5.2	5.2	3.9	3.7	3.7	-
157	5.3	5.0	5.0	3.7	3.5	3.5	-
164	4.6	4.6	4.8	3.5	3.5	3.3	-
170	4.0	4.4	4.6	3.3	3.3	3.1	-
177	3.5	3.9	-	2.8	3.0	3.0	-
184	2.8	3.5	-	2.1	2.8	2.8	-
190	2.4	2.8	-	1.7	2.4	2.6	-
197	1.7	2.1	-	-	-	-	-
203	-	1.7	-	-	-	-	-
216	-	-	-	-	-	-	-

164.7 ft Main boom							
Radius ft	82.0 ft*			108.3 ft*			1,000 lb
	Extension						
	0°	20°	40°	0°	20°	40°	
39	-	-	-	-	-	-	-
46	7.7	-	-	-	-	-	-
52	7.7	-	-	3.9	-	-	-
59	7.7	-	-	3.9	-	-	-
65	7.7	-	-	3.9	-	-	-
72	7.7	7.2	-	3.9	3.7	-	-
79	7.7	7.2	-	3.9	3.7	-	-
85	7.7	7.2	6.8	3.9	3.7	-	-
92	7.4	7.0	6.6	3.9	3.7	3.5	-
98	7.2	6.8	6.4	3.9	3.7	3.5	-
105	6.8	6.6	6.1	3.9	3.7	3.5	-
111	6.6	6.2	5.9	3.9	3.7	3.5	-
118	6.1	5.9	5.7	3.9	3.7	3.5	-
124	5.9	5.7	5.3	3.9	3.7	3.5	-
131	5.7	5.3	5.0	3.9	3.5	3.3	-
138	5.2	5.0	4.8	3.7	3.5	3.3	-
144	5.0	4.8	4.6	3.5	3.3	3.0	-
151	4.6	4.6	4.4	3.3	3.0	3.0	-
157	4.4	4.2	4.2	3.1	2.8	2.8	-
164	3.9	3.9	3.9	2.8	2.6	2.6	-
170	3.7	3.7	3.7	2.6	2.6	2.6	-
177	3.1	3.5	3.5	2.4	2.4	2.4	-
184	2.6	3.2	3.5	1.9	2.1	2.4	-
190	2.0	2.6	-	-	1.9	2.2	-
197	1.5	1.9	-	-	-	-	-
203	-	1.5	-	-	-	-	-
216	-	-	-	-	-	-	-

55,100 lb   25'1" x 24'7" 360° 85%

152.2 ft Main boom							
Radius ft	82.0 ft*			108.3 ft*			1,000 lb
	Extension						
	0°	20°	40°	0°	20°	40°	
39	9.2	-	-	-	-	-	-
46	9.2	-	-	5.5	-	-	-
52	9.2	-	-	5.5	-	-	-
59	9.2	-	-	5.5	-	-	-
65	9.0	8.6	-	5.5	-	-	-
72	9.0	8.3	-	5.5	5.2	-	-
79	8.8	8.1	7.0	5.5	5.2	-	-
85	8.6	7.7	7.0	5.5	5.2	5.0	-
92	8.3	7.4	6.8	5.5	5.2	5.0	-
98	8.3	7.2	6.8	5.5	5.2	5.0	-
105	7.9	7.0	6.6	5.5	5.2	4.8	-
111	7.5	6.8	6.4	5.5	5.0	4.6	-
118	7.2	6.6	6.3	5.2	4.8	4.4	-
124	6.8	6.4	6.1	5.0	4.6	4.4	-
131	6.6	6.1	5.9	4.8	4.4	4.1	-
138	5.7	5.7	5.7	4.4	4.1	3.9	-
144	4.8	5.5	5.5	4.2	3.9	3.7	-
151	3.9	5.0	5.2	3.2	3.7	3.7	-
157	3.3	4.2	4.8	2.6	3.5	3.5	-
164	2.6	3.5	3.9	1.9	3.0	3.3	-
170	2.0	2.9	3.3	1.5	2.4	2.9	-
177	1.5	2.2	-	-	1.7	2.2	-
184	-	1.5	-	-	-	1.5	-

164.7 ft Main boom							
Radius ft	82.0 ft*			108.3 ft*			1,000 lb
	Extension						
	0°	20°	40°	0°	20°	40°	
39	-	-	-	-	-	-	-
46	7.7	-	-	-	-	-	-
52	7.7	-	-	3.9	-	-	-
59	7.7	-	-	3.9	-	-	-
65	7.7	-	-	3.9	-	-	-
72	7.7	7.2	-	3.9	3.7	-	-
79	7.7	7.2	-	3.9	3.7	-	-
85	7.7	7.2	6.8	3.9	3.7	-	-
92	7.4	7.0	6.6	3.9	3.7	3.5	-
98	7.2	6.8	6.4	3.9	3.7	3.5	-
105	6.8	6.6	6.1	3.9	3.7	3.5	-
111	6.6	6.2	5.9	3.9	3.7	3.5	-
118	6.1	5.9	5.7	3.9	3.7	3.5	-
124	5.9	5.7	5.3	3.9	3.7	3.5	-
131	5.7	5.3	5.0	3.9	3.5	3.3	-
138	5.2	5.0	4.8	3.7	3.5	3.3	-
144	4.4	4.8	4.6	3.5	3.3	3.0	-
151	3.7	4.6	4.4	2.8	3.0	3.0	-
157	3.1	4.0	4.2	2.2	2.8	2.8	-
164	2.4	3.3	3.7	1.5	2.4	2.6	-
170	1.8	2.7	3.1	-	2.0	2.6	-
177	-	2.0	2.4	-	-	2.0	-
184	-	-	1.7	-	-	-	-

**Remarks**

\* Preliminary

**29,320 lb**  **25'1" x 24'7"** **360°** **85%**

**152.2 ft Main boom**

Radius ft	82.0 ft*			108.3 ft*		
	0°	20°	40°	0°	20°	40°
	1,000 lb					
39	9.2	-	-	-	-	-
46	9.2	-	-	5.5	-	-
52	9.2	-	-	5.5	-	-
59	9.2	-	-	5.5	-	-
65	9.0	8.6	-	5.5	-	-
72	9.0	8.3	-	5.5	5.2	-
79	8.8	8.1	7.0	5.5	5.2	-
85	8.6	7.7	7.0	5.5	5.2	5.0
92	7.6	7.4	6.8	5.5	5.2	5.0
98	6.4	7.2	6.8	5.5	5.2	5.0
105	5.2	7.0	6.6	4.1	5.2	4.8
111	4.2	5.8	6.4	3.1	4.8	4.6
118	3.3	4.8	5.9	2.2	3.7	4.4
124	2.5	3.8	4.9	-	2.9	4.2
131	1.7	3.1	4.0	-	2.0	3.1
138	-	2.1	3.0	-	-	2.3
144	-	1.5	2.4	-	-	1.5
151	-	-	1.5	-	-	-
157	-	-	-	-	-	-

**164.7 ft Main boom**

Radius ft	82.0 ft*			108.3 ft*		
	0°	20°	40°	0°	20°	40°
	1,000 lb					
39	-	-	-	-	-	-
46	7.7	-	-	-	-	-
52	7.7	-	-	3.9	-	-
59	7.7	-	-	3.9	-	-
65	7.7	-	-	3.9	-	-
72	7.7	7.2	-	3.9	3.7	-
79	7.7	7.2	-	3.9	3.7	-
85	7.7	7.2	6.8	3.9	3.7	-
92	7.0	7.0	6.6	3.9	3.7	3.5
98	6.0	6.8	6.4	3.9	3.7	3.5
105	4.6	6.3	6.1	3.5	3.7	3.5
111	3.8	5.3	5.9	2.5	3.7	3.5
118	2.6	4.2	5.5	1.5	3.0	3.5
124	2.0	3.3	4.5	-	2.2	3.5
131	-	2.4	3.5	-	-	2.6
138	-	1.7	2.6	-	-	1.7
144	-	-	2.0	-	-	-
151	-	-	-	-	-	-
157	-	-	-	-	-	-

**25,790 lb**  **25'1" x 24'7"** **360°** **85%**

**152.2 ft Main boom**

Radius ft	82.0 ft*			108.3 ft*		
	0°	20°	40°	0°	20°	40°
	1,000 lb					
39	9.2	-	-	-	-	-
46	9.2	-	-	5.5	-	-
52	9.2	-	-	5.5	-	-
59	9.2	-	-	5.5	-	-
65	9.0	8.6	-	5.5	-	-
72	9.0	8.3	-	5.5	5.2	-
79	8.7	8.1	7.0	5.5	5.2	-
85	8.1	7.7	7.0	5.5	5.2	5.0
92	6.5	7.4	6.8	5.4	5.2	5.0
98	5.5	7.2	6.8	4.4	5.2	5.0
105	4.4	5.9	6.6	3.3	5.0	4.8
111	3.3	4.9	6.2	2.2	4.0	4.6
118	2.4	3.9	5.0	-	2.8	4.4
124	1.8	3.1	4.2	-	2.0	3.4
131	-	2.2	3.3	-	-	2.4
138	-	1.5	2.3	-	-	1.5
144	-	-	1.5	-	-	-

**164.7 ft Main boom**

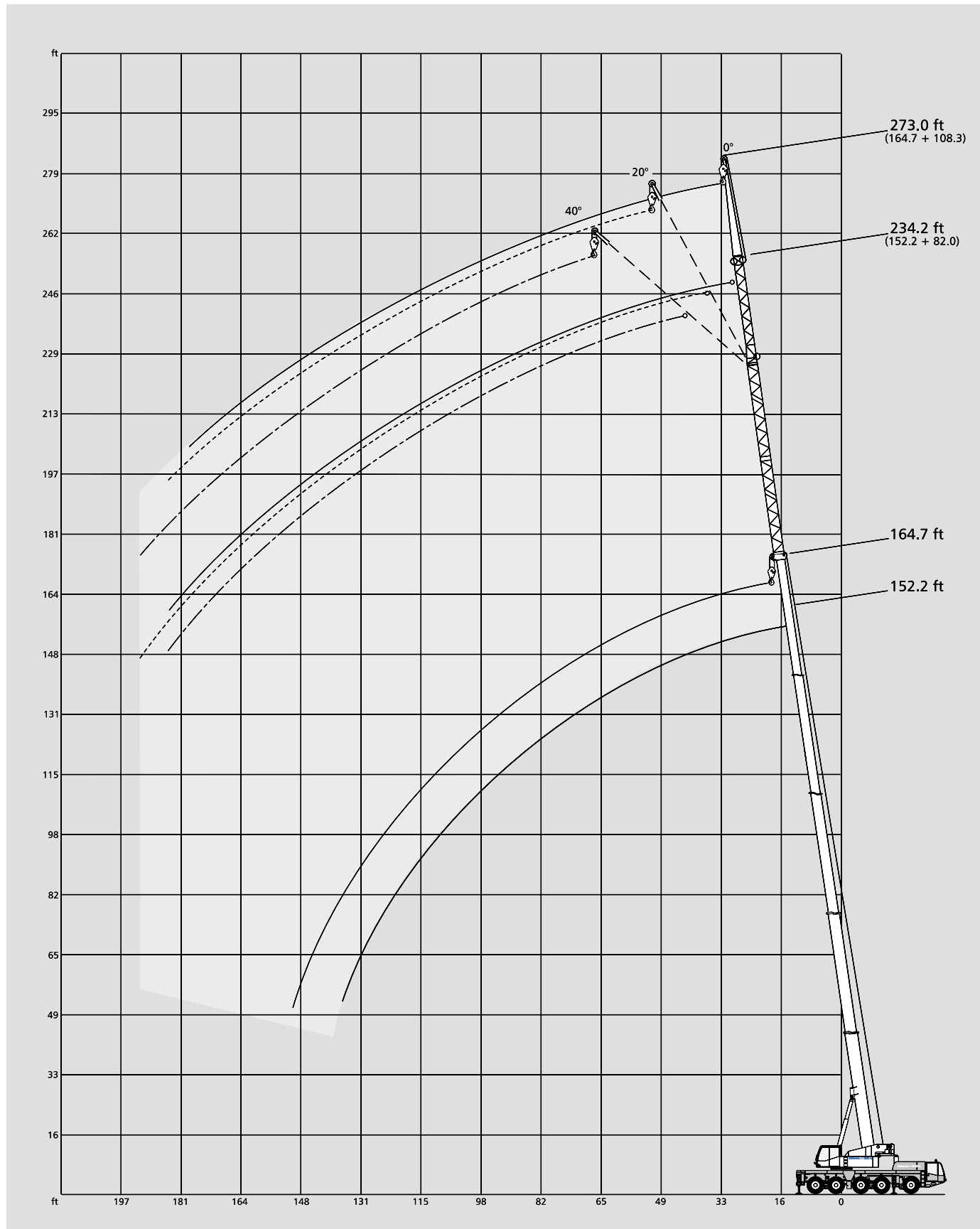
Radius ft	82.0 ft*			108.3 ft*		
	0°	20°	40°	0°	20°	40°
	1,000 lb					
39	-	-	-	-	-	-
46	7.7	-	-	-	-	-
52	7.7	-	-	3.9	-	-
59	7.7	-	-	3.9	-	-
65	7.7	-	-	3.9	-	-
72	7.7	7.2	-	3.9	3.7	-
79	7.7	7.2	-	3.9	3.7	-
85	7.5	7.2	6.8	3.9	3.7	-
92	6.1	7.0	6.6	3.9	3.7	3.5
98	4.9	6.8	6.4	3.5	3.7	3.5
105	3.7	5.5	6.1	2.4	3.7	3.5
111	2.7	4.5	5.7	1.6	3.3	3.5
118	1.7	3.3	4.6	-	2.2	3.5
124	-	2.5	3.8	-	1.6	2.7
131	-	1.7	2.8	-	-	1.7
138	-	-	1.9	-	-	-
144	-	-	-	-	-	-

**Remarks**

\* Preliminary

**3**

# Working ranges main boom extension



# Notes to lifting capacity

Lifting capacities do not exceed 85% of tipping load.

Weight of hook blocks and slings are part of the load, and should be deducted from the capacity ratings.


Crane operation is permissible up to a  
wind pressure of ..... 1.25 lb/ft<sup>2</sup>  
wind speed of ..... 32 ft/s

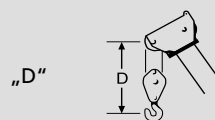
Consult operation manual for further details.

Note: Data published herein is intended as a guide only and shall not be construed to warrant applicability for lifting purposes. Crane operation is subject to the computer charts and operation manual included with the crane.

## Key

 Counterweight

 Lifting capacities on outriggers 360°



# Overview of standard duty charts

 25'1" x 24'7"


 25'1" x 17'9"


## Main boom

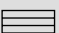
Main boom	0 lb	4,400 lb	25,790 lb	29,320 lb	55,000 lb	70,530 lb
	360°	360°	360°	360°	360°	360°
41.0 ft	x	x	x	x	x	x
55.1 ft	x	x	x	x	x	x
68.9 ft	x	x	x	x	x	x
82.7 ft	x	x	x	x	x	x
96.8 ft	x	x	x	x	x	x
110.6 ft	x	x	x	x	x	x
124.7 ft	x	x	x	x	x	x
138.5 ft	x	x	x	x	x	x
152.2 ft	x	x	x	x	x	x
164.7 ft	x	x	x	x	x	x

Main boom	0 lb	4,400 lb	25,790 lb	29,320 lb	55,000 lb	70,530 lb
	360°	360°	360°	360°	360°	360°
41.0 ft	x	x	x	x	x	x
55.1 ft	x	x	x	x	x	x
68.9 ft	x	x	x	x	x	x
82.7 ft	x	x	x	x	x	x
96.8 ft	x	x	x	x	x	x
110.6 ft	—	x	x	x	x	x
124.7 ft	—	x	x	x	x	x
138.5 ft	—	x	x	x	x	x
152.2 ft	—	x	x	x	x	x
164.7 ft	—	x	x	x	x	x

## Main boom extension

Main boom	Extension			
		0 / 4,400 / 25,790 / 29,320 / 55,000 / 70,530 lb		
		0°	20°	40°
124.7 ft	30.2 ft	x	x	x
	55.8 ft	x	x	x
138.5 ft	30.2 ft	x	x	x
	55.8 ft	x	x	x
152.2 ft	30.2 ft	x	x	x
	55.8 ft	x	x	x
164.7 ft	30.2 ft	x	x	x
	55.8 ft	x	x	x

Main boom	Extension			
		25,790 / 29,320 / 55,000 / 70,530 lb		
		0°	20°	40°
124.7 ft	30.2 ft	x	x	x
	55.8 ft	x	x	x
138.5 ft	30.2 ft	x	x	x
	55.8 ft	x	x	x
152.2 ft	30.2 ft	x	x	x
	55.8 ft	x	x	x
164.7 ft	30.2 ft	x	x	x
	55.8 ft	x	x	x

Main boom	Extension			
		25,790 / 29,320 / 55,000 / 70,530 lb		
		0°	20°	40°
124.7 ft	82.0 ft	x	x	x
	108.1 ft	x	x	x
138.5 ft	82.0 ft	x	x	x
	108.1 ft	x	x	x
152.2 ft	82.0 ft	x	x	x
	108.1 ft	x	x	x
164.7 ft	82.0 ft	x	x	x
	108.1 ft	x	x	x

5