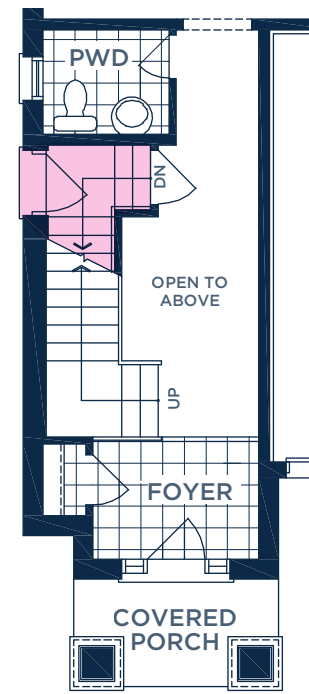


MODEL 3705 ELEV. B:

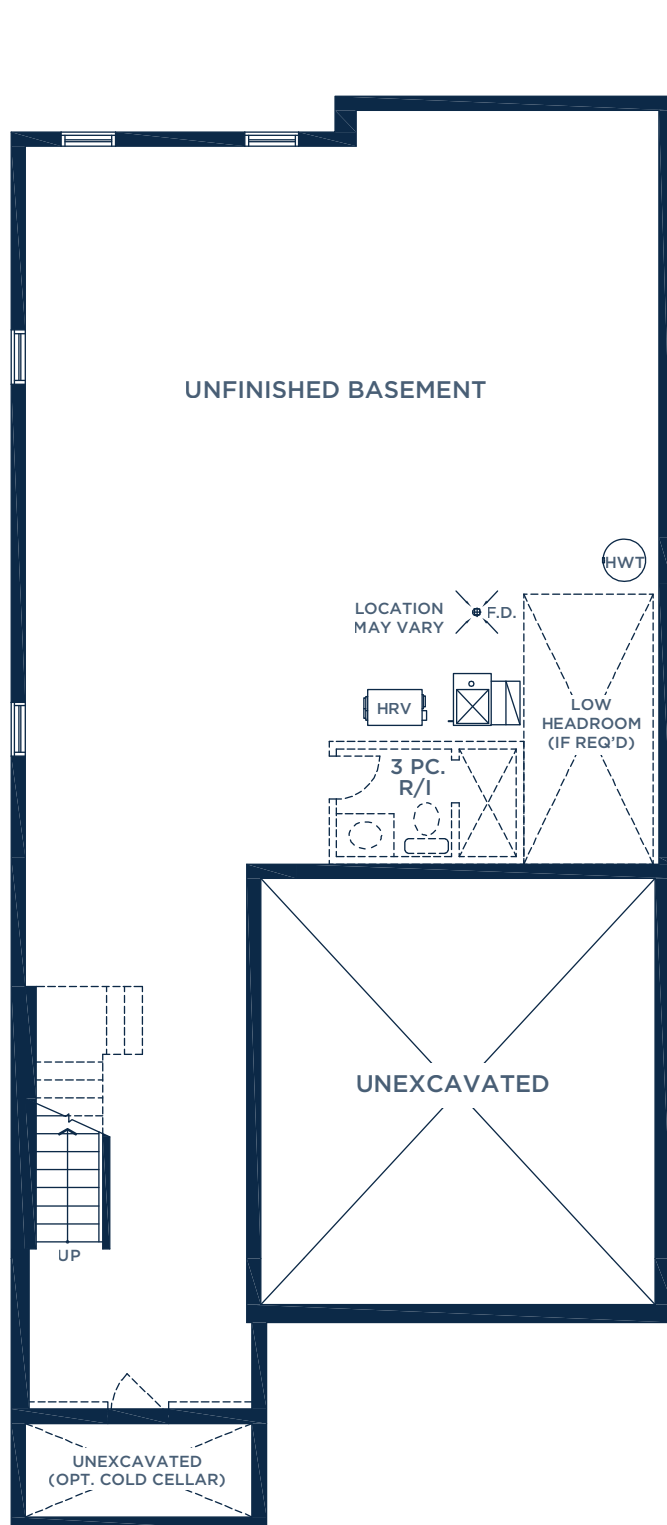
2,992 SQ. FT., 4 BEDROOMS, 3.5 BATHROOMS

OPT. FLEXHOUS LOWER LEVEL ADDS 1,139 SQ. FT.

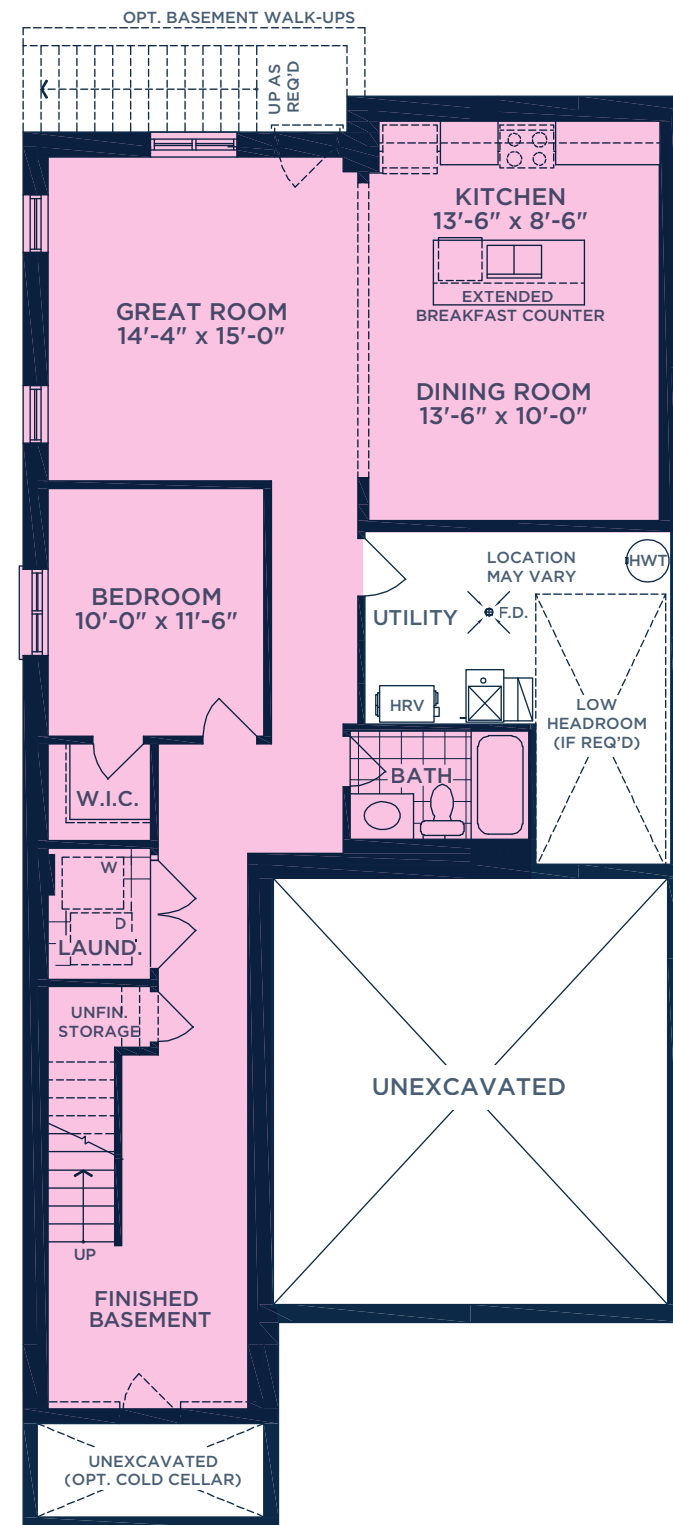
1 BEDROOM AND 1 BATHROOM



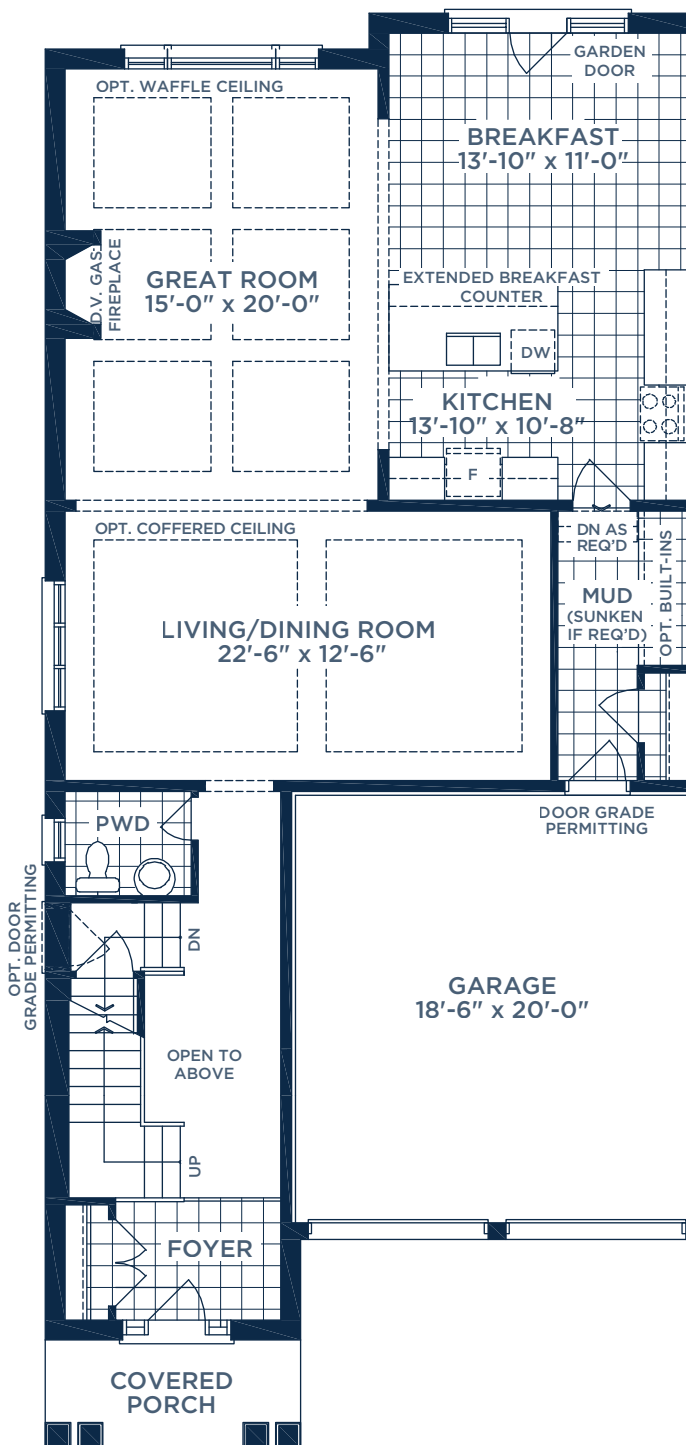
PART. GROUND FLOOR PLAN FOR OPT. FLEXHOUS™ LOWER LEVEL W/ SIDE DOOR ELEV. A (B & C SIMILAR)



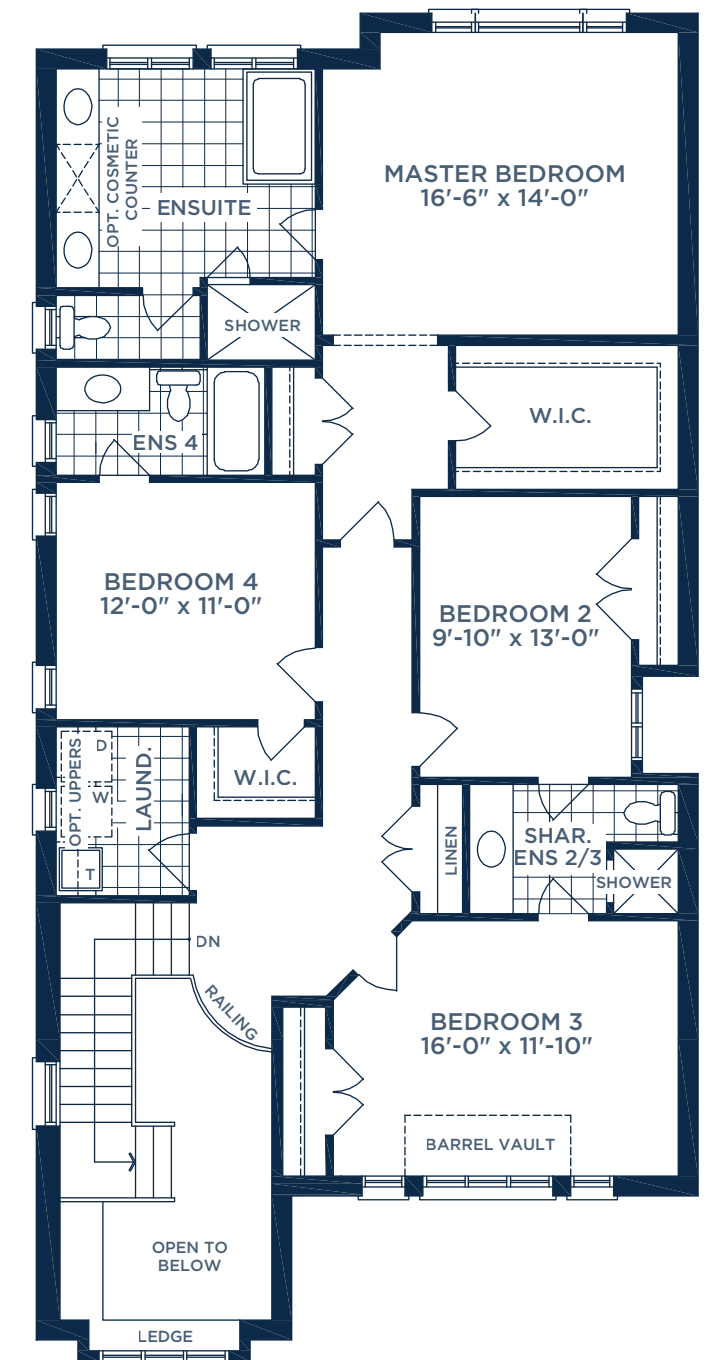
LOWER LEVEL PLAN ELEV. B



OPT. FLEXHOUS™ LOWER LEVEL PLAN ELEV. B



GROUND FLOOR PLAN ELEV. B



SECOND FLOOR PLAN ELEV. B