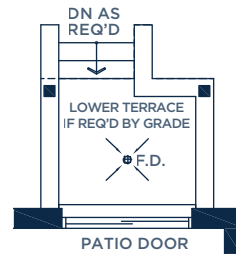
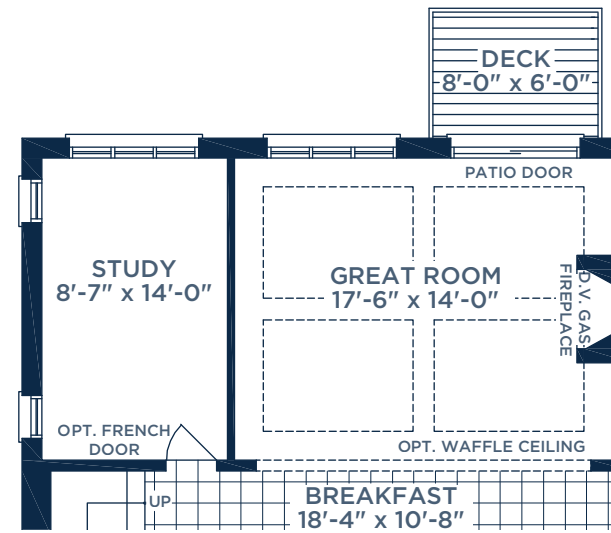


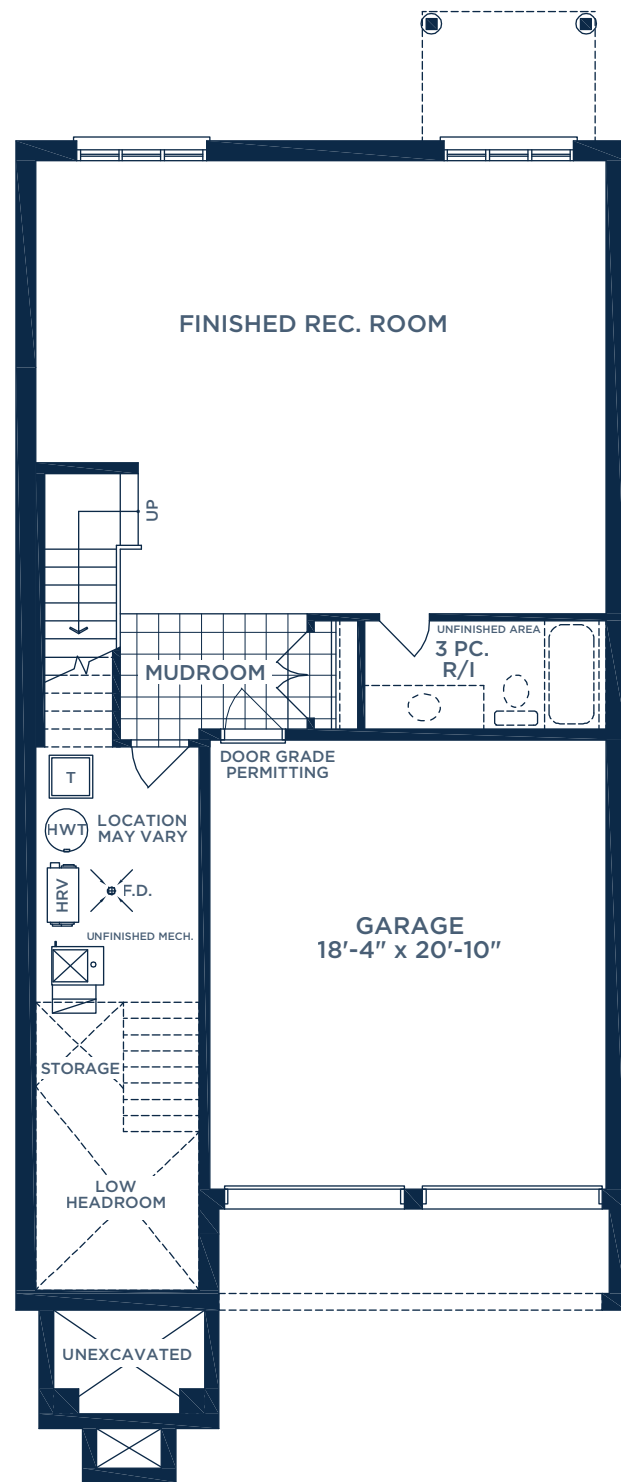
**MODEL 3500 ELEV. B:**  
**3,613 SQ. FT., 4 BEDROOMS, 3.5 BATHROOMS**  
 OPT. GROUND FLOOR PLAN ADDS 67 SQ. FT.  
 1 BEDROOM AND 1 BATHROOM



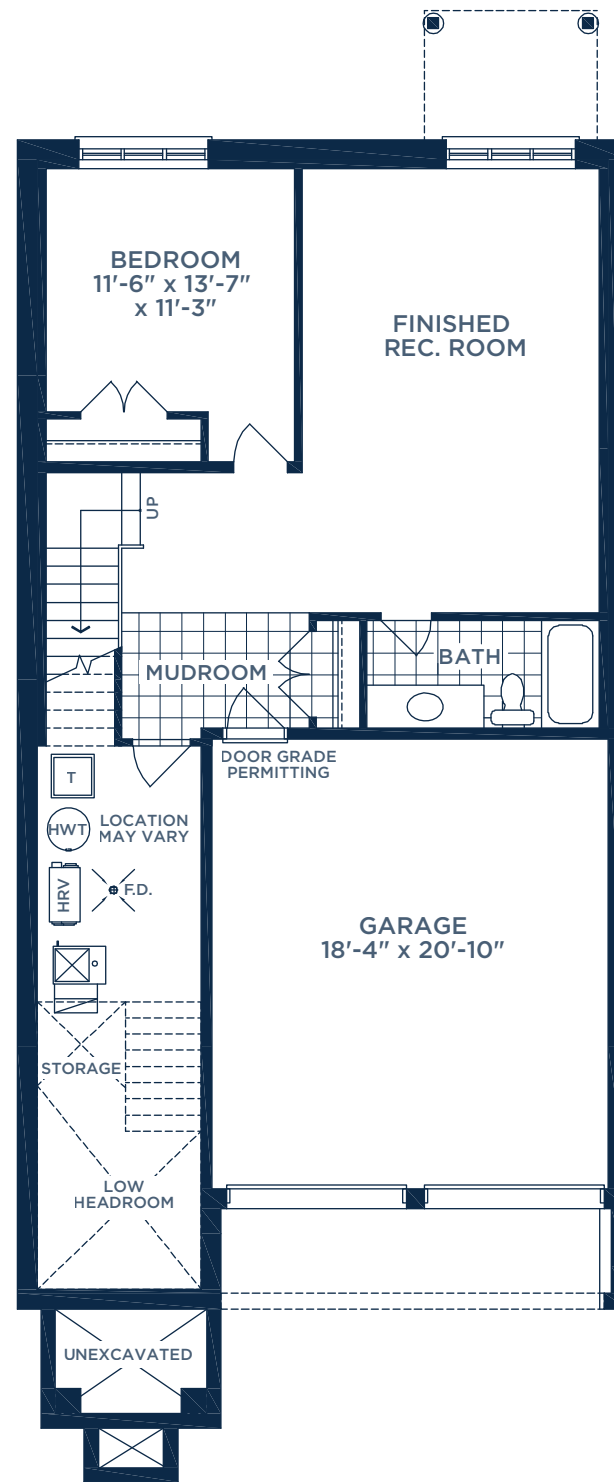
PART. OPT. GROUND FLOOR PLAN W/ WALK-OUT



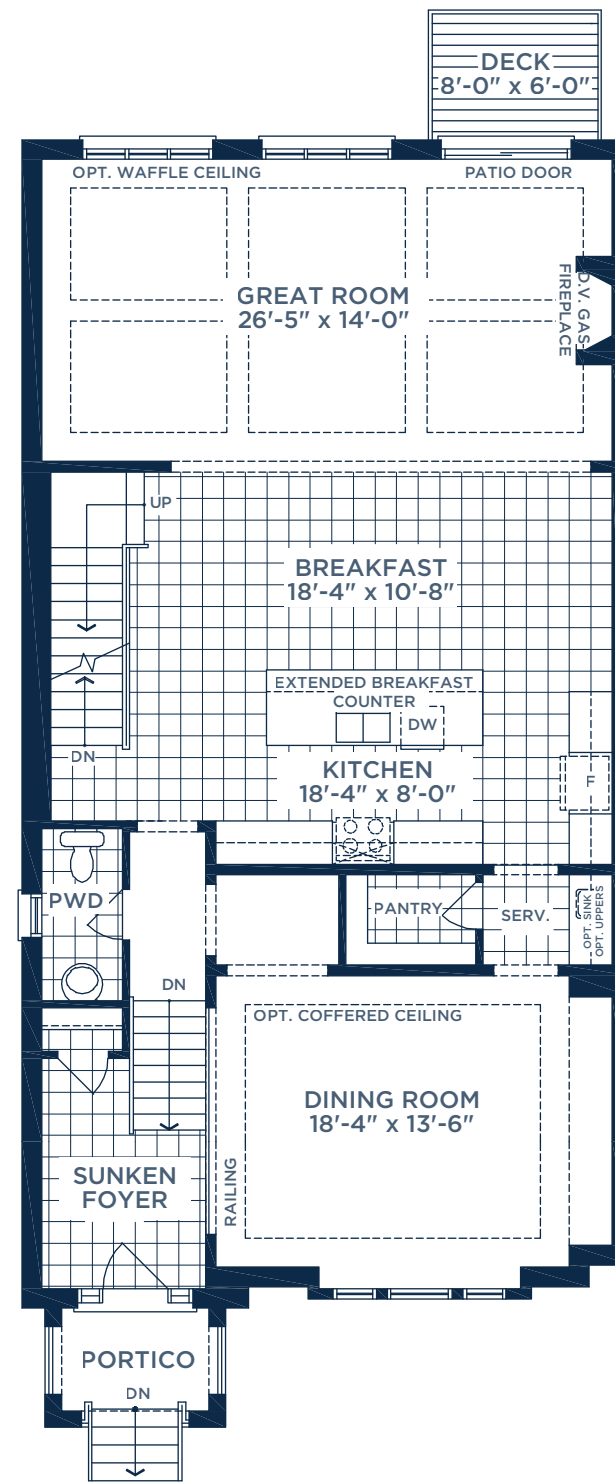
PART. OPT. MAIN FLOOR PLAN W/ STUDY



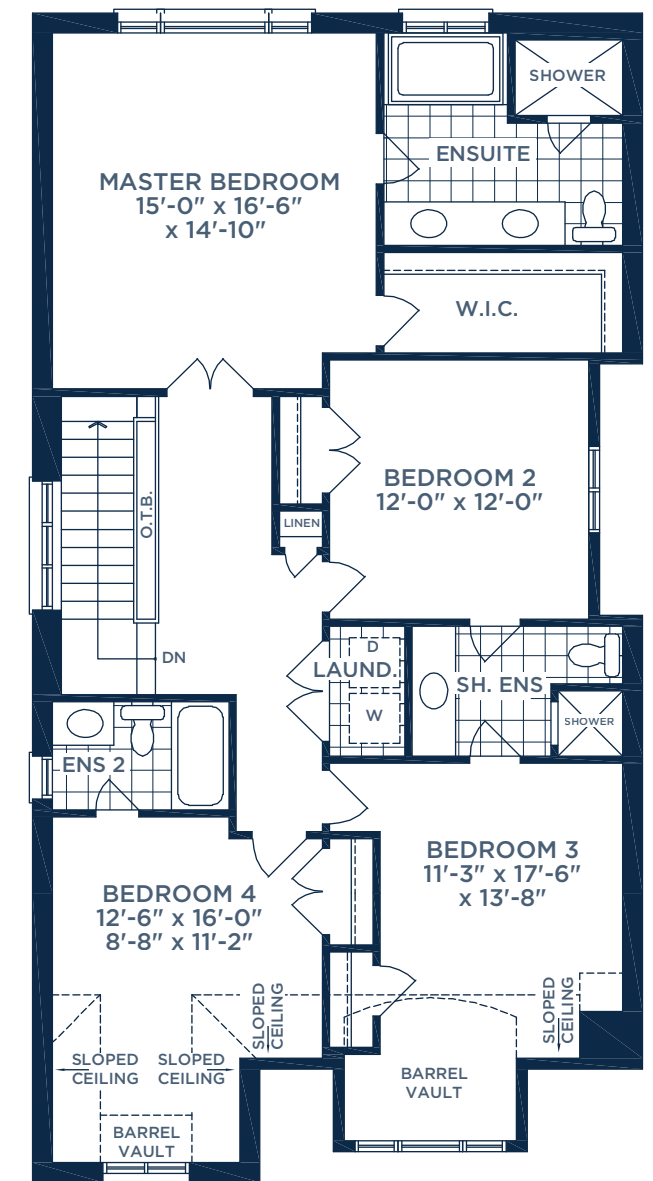
GROUND FLOOR PLAN ELEV. B



OPT. GROUND FLOOR PLAN W/ BEDROOM ELEV. B



MAIN FLOOR PLAN ELEV. B



SECOND FLOOR PLAN ELEV. B