

ΘCTAVE

AT JUNCTION VILLAGE



Thompson 225

FROM \$608,300 *

BUILDER: SJD Homes

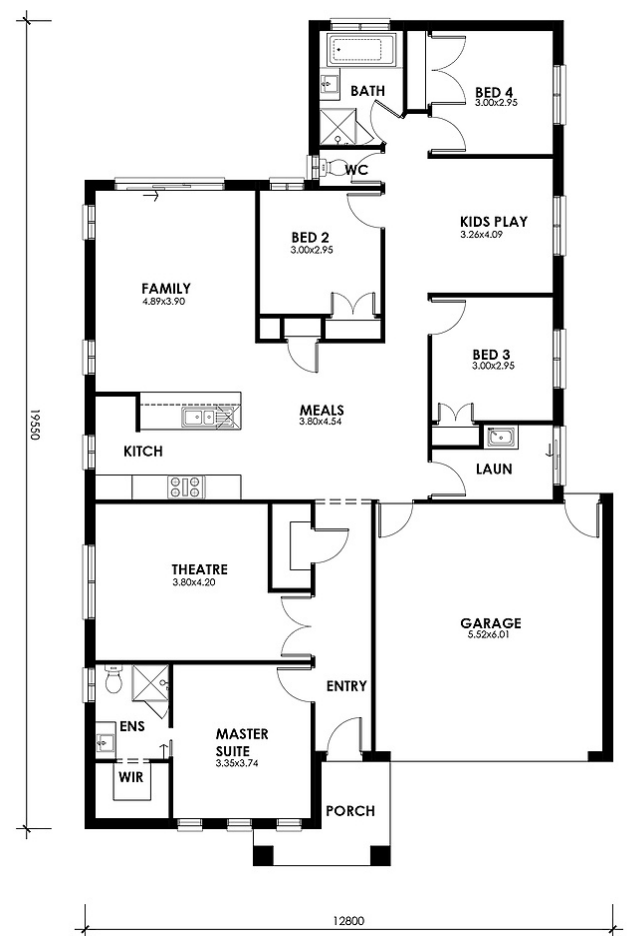


Land Size: 448.0 m²

Frontage: 14 m

Inclusions

- Smart façade design
- Raised porch with render
- 2740mm ceilings
- 20mm stone benchtop to kitchen
- 900mm appliances
- Glass or tiled kitchen splashback
- Set of pot drawers to kitchen
- Tiled shower bases
- Shower rails, towel rails & toilet roll holders
- Window locks & flyscreens
- Gas ducted heating



*Price indicative only. Please do your own due diligence when contacting the builder. See octavejunctionvillage.com.au/disclaimer

Sales Suite

1160 Ballarto Road,
Junction Village VIC 3977

Contact

1300 281 175
octavejunctionvillage.com.au



