

## remanium® star CL powered by Dentaaurum

CoCrW-alloy (powder) acc. to EN ISO 9693 / DIN EN ISO 22674, Type 5

CE 0483

With an appropriate approval\* remanium® star CL can be used for production of metallic restorations by means of the metal laser melting process.

27

Co

58,933

### RANGE OF APPLICATION

With an appropriate approval\* remanium® star CL can be used for production of crowns and bridges, frames for metal ceramic veneering, cast partials, primary – and secondary parts for combined restorations.

### CHEMICAL COMPOSITION

Component	Mass (%)
Co	60,5
Cr	28
W	9
Si	1,5
Other elements <1 %: Mn, N, Nb, Fe. free from nickel, beryllium and gallium	

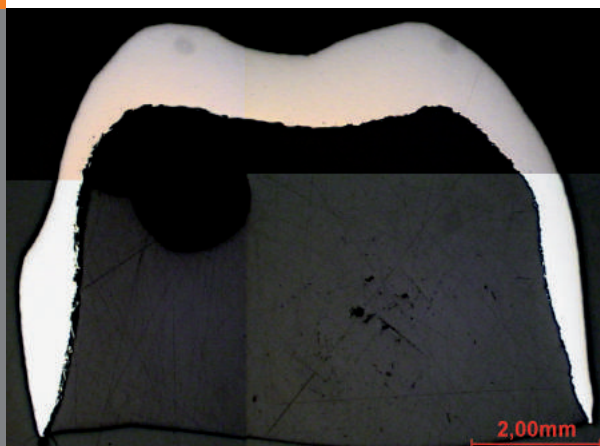
## TECHNICAL DATA IN LINE WITH DIN EN ISO 9693 / DIN EN ISO 22674 AFTER RECOMMENDED HEAT TREATMENT

Yield Strength $R_{p0,2}$	635 N/mm <sup>2</sup>
Tensile Strength $R_m$	1030 N/mm <sup>2</sup>
Elongation at fracture $A_5$	10 %
Young's modulus	230.000 N/mm <sup>2</sup>
Melting range $\Delta$	1320-1420°C
Density $\rho$	8,6 g/cm <sup>3</sup>
Coefficient of thermal expansion TEC (25-500°C)	14,1 x 10 <sup>-6</sup> K <sup>-1</sup>
Colour	white
Metal-ceramic bond strength acc. to EN ISO 9693, 3-Pt.-bending test (min. 25 N/mm <sup>2</sup> acc. to EN ISO 9693)	40 N/mm <sup>2</sup> (Carmen CCS, Dentaurum)
Type	5
Biocompatibility, L 929-Proliferation acc. to EN ISO 10993-5, -12, ISO 9363-1, LM SOP 4-06-01	No deliberation of cell toxic active substances
Corrosion resistance, static immersion test acc. to EN ISO 10271 (max. 200 µg/cm <sup>2</sup> x 7d acc. to EN ISO 22674)	Ion release 3,5 µg/cm <sup>2</sup> x 7d

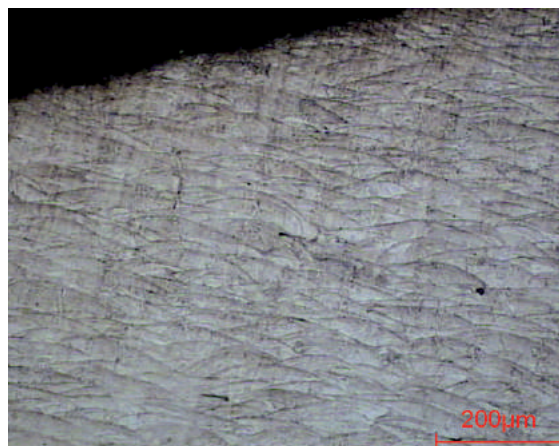
**remanium®  
 star CL**  
 powered by  
 Dentaurum

### MICROSECTION

3-unit bridge (16 x)



3-unit bridge etched (100 x)



### HEAT TREATMENT

Perform heat treatment under an argon atmosphere. Heat up to 1150°C. Maintain temperature for 1 hour. Allow the components to cool down to 300°C in the oven.

**Concept Laser GmbH**  
 An der Zeil 8  
 D 96215 Lichtenfels

T: +49 (0)95 71. 1679 200  
 F: +49 (0)95 71. 1679 299  
 info@concept-laser.de

### MICROSTRUCTURE

Components made from the cobalt-chromium alloy remanium® star CL display a homogeneous, pore-free structure after they are constructed by means of the metal laser melting process LaserCUSING®.

**Concept Laser Inc.**  
 1000 Texan Trail, Ste 150  
 Grapevine, TX 76051 USA

T: +1-817-328-6500  
 info@conceptlaserinc.com  
 www.conceptlaserinc.com

All of the specified figures are approximate figures. The figures which are provided reflect the current level of our knowledge and are dependent on process and machine parameters. The information provided on this material data sheet is therefore not binding and is not deemed to be certified.  
 \* The approval is branch-specific and/or application-specific and it must be, therefore, carried out by the consumer/user. Approval of materials by Concept Laser GmbH is not available.