



Cancer Incidence and Mortality

Delaware 2006-2010

Delaware Cancer Consortium

May 22, 2014

Cancer Incidence & Mortality Report

Delaware, 2006-2010

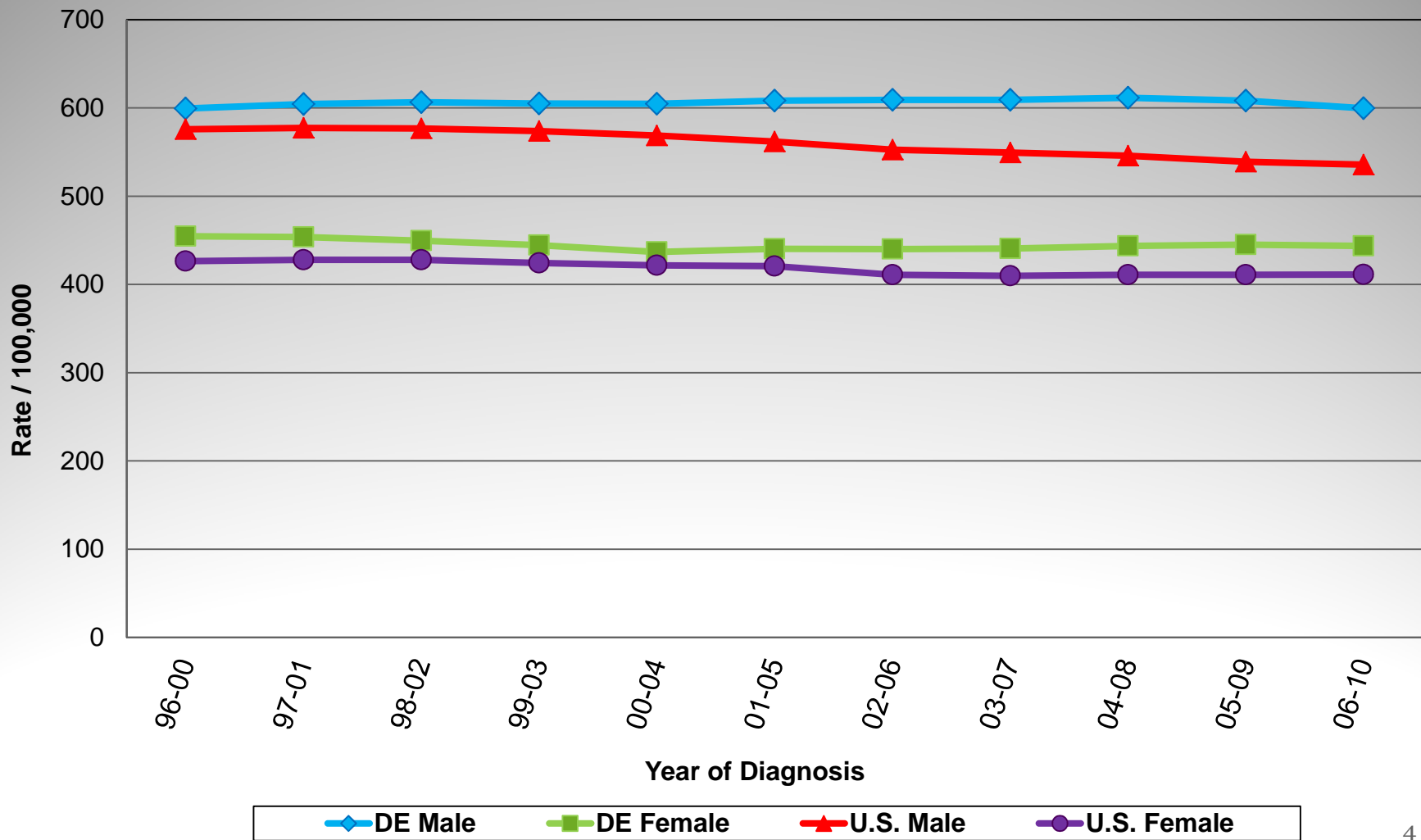
- **All cancer sites combined**
- **Eight individual cancer types**
- **Cancer sites associated with HPV infection**
- **Census tract analyses**

Cancer Incidence

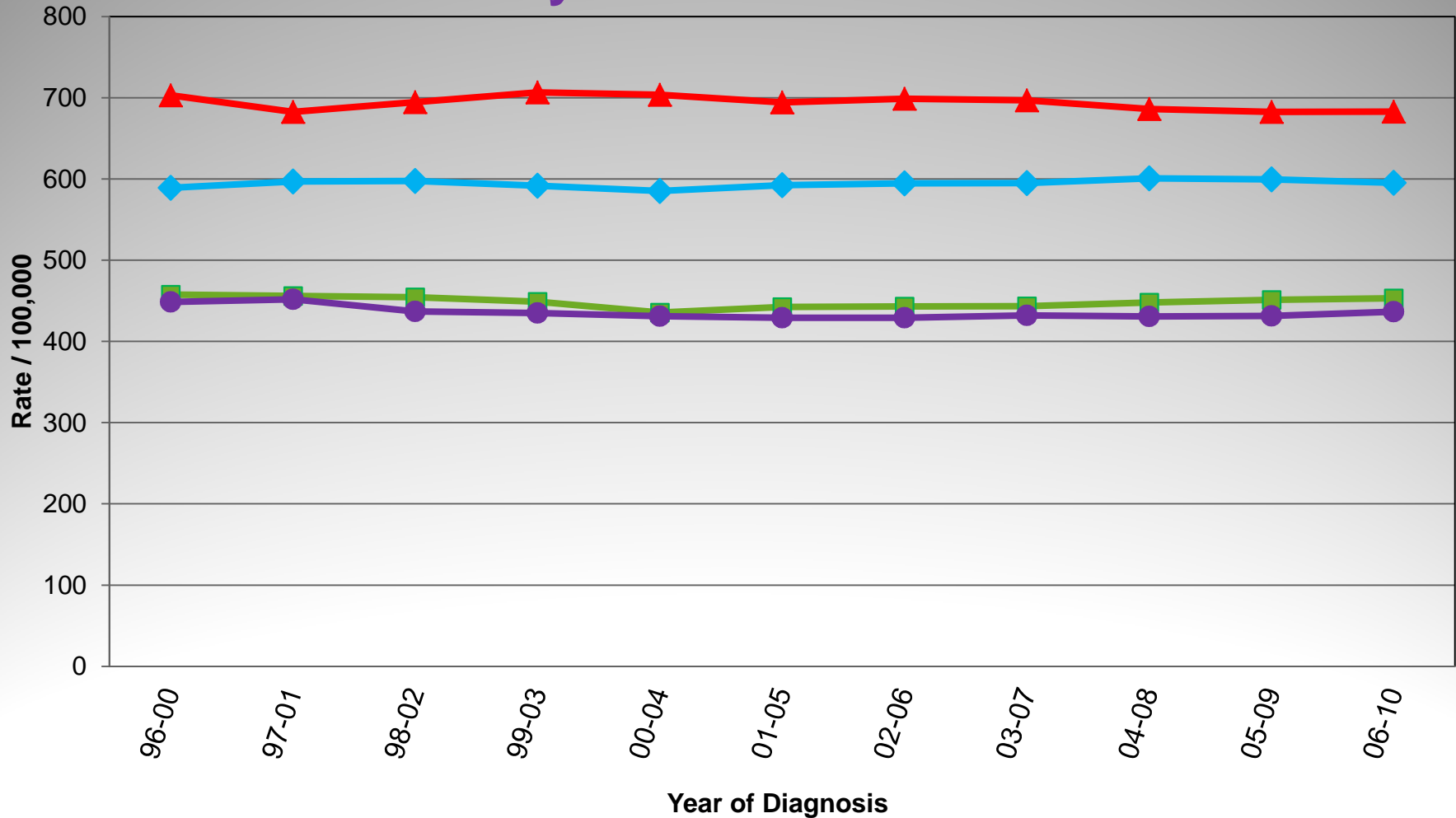
Delaware, 2006-2010

- **25,475 cases of cancer diagnosed among Delawareans**
 - 53.2 percent male
 - 46.8 percent female
- **Average of 5,095 cancer cases per year**

How do Delaware's cancer incidence rates compare with the U.S. rates?



Delaware's Cancer Incidence Patterns by Sex and Race



◆ Caucasian Male ■ Caucasian Female ▲ African American Male ● African American Female

Most Common Cancer Sites for Incidence Delaware, 2006-2010

- **Males**

- prostate – 31.1%
- lung – 14.2%
- colorectal – 8.6%
- urinary bladder – 6.8%

- **Females**

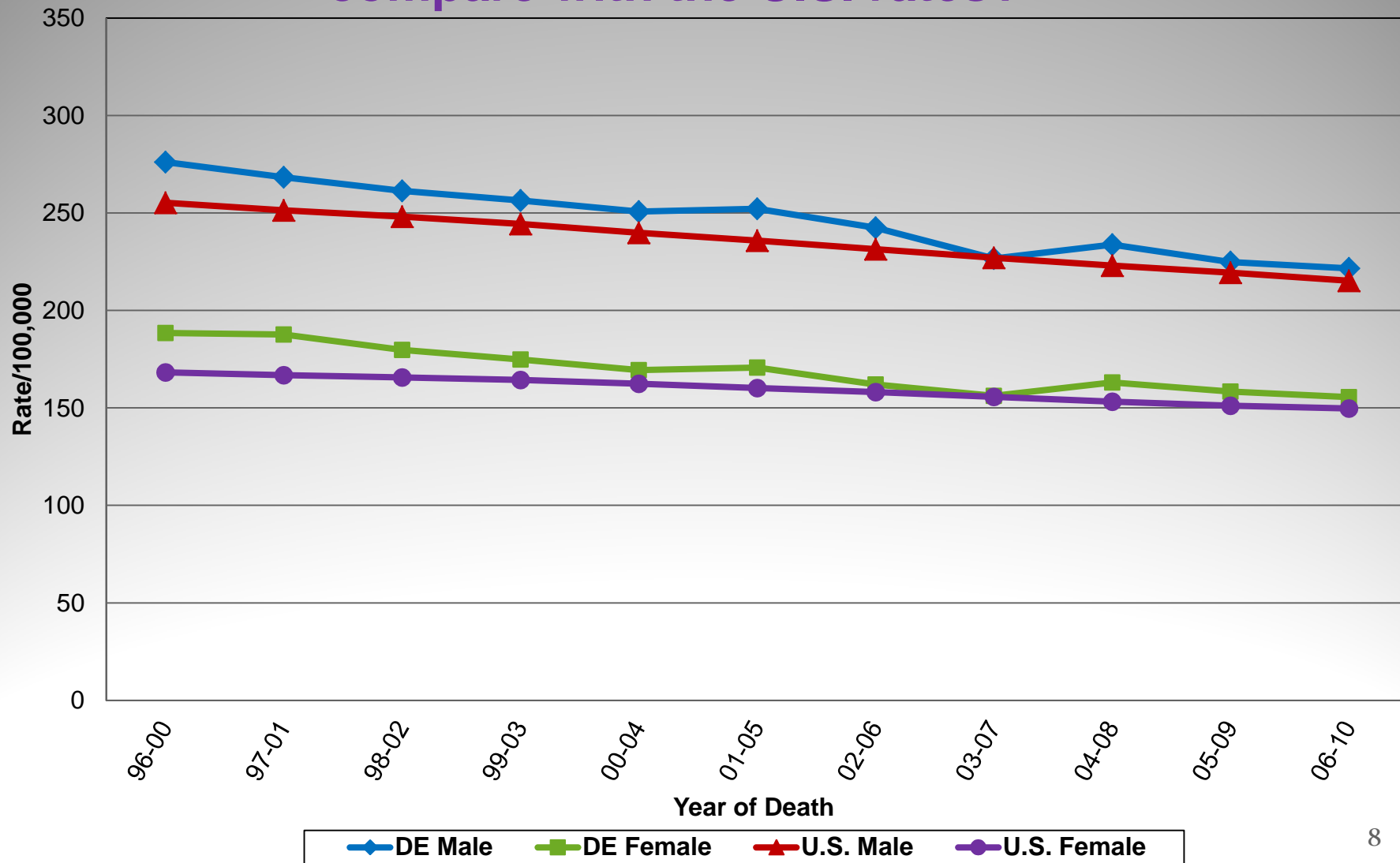
- breast – 28.3%
- lung – 15.3%
- colorectal – 9.2%
- uterus – 6.2%

Cancer Mortality

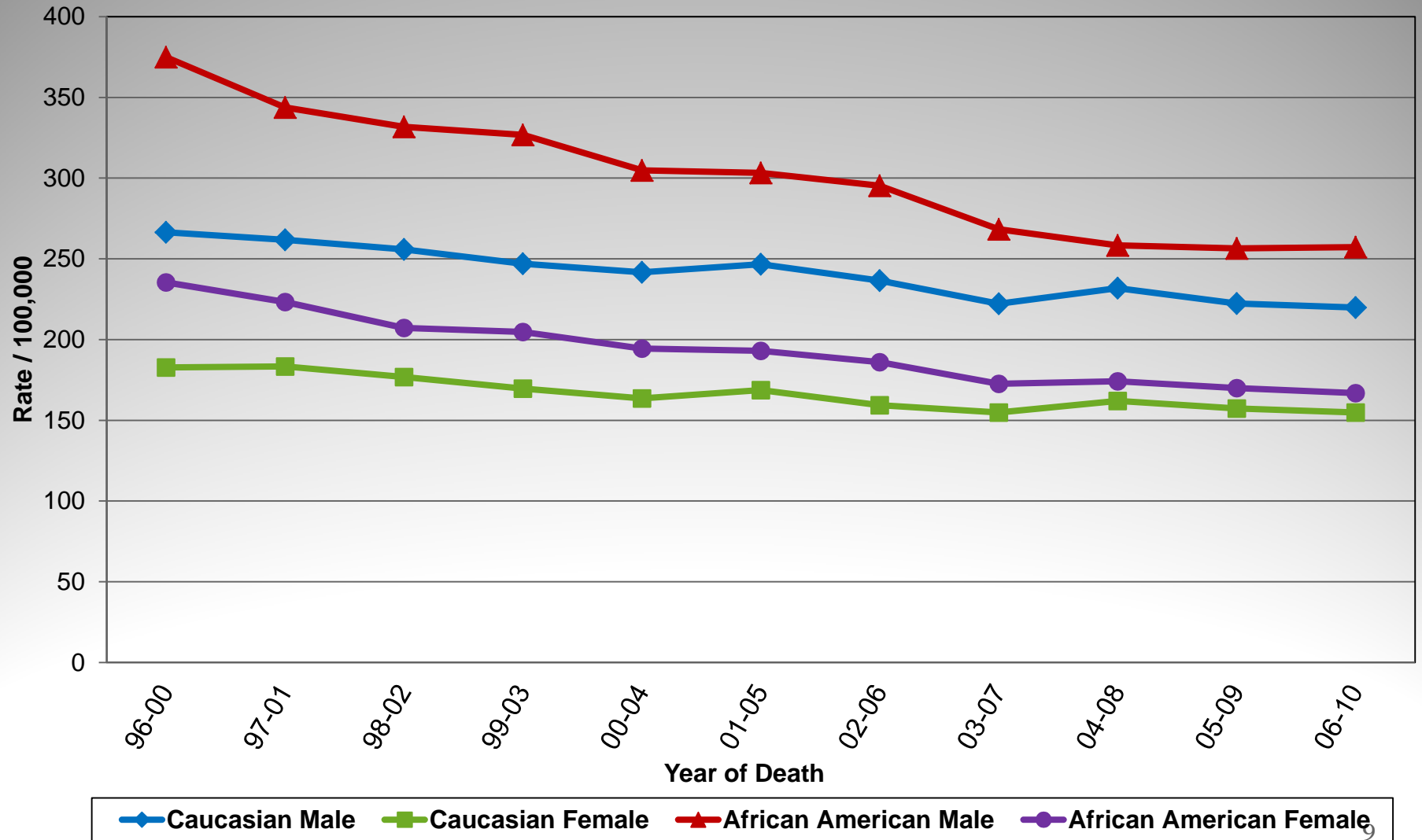
Delaware, 2006-2010

- **9,197 deaths from cancer among Delawareans**
 - 52.4 percent are male
 - 47.6 percent are female
- **Average of 1,840 cancer deaths per year**

How do Delaware's cancer mortality rates compare with the U.S. rates?



Delaware's Cancer Mortality Patterns by Sex and Race



Deadliest Cancer Types in Delaware

- **Males**

- lung – 30.6%
- prostate – 9.3%
- colorectal – 8.9%
- pancreas – 5.8%

- **Females**

- lung – 30.0%
- breast – 14.1%
- colorectal – 8.6%
- pancreas – 6.0%

Lung Cancer

- **Progress**

- incidence down 9.0% in DE compared with 7.1% U.S.
- DE 19.0% local stage vs. U.S. 17.9%

- **Challenges**

- current smokers = 19.7% vs. U.S. 19.6%
- % distant stage increasing while % local stage decreasing
- DE incidence significantly higher than U.S. (W M & W F)
- DE mortality significantly higher than U.S. (W & F)
- DE women 4th highest incidence & 3rd highest mortality

Colorectal Cancer

Progress

- DE 4th highest in screening – 75.1% vs. 67.3% U.S.
- % local stage equal for Caucasians and African Americans
- DE incidence down 26.4% vs. U.S. 18.9%
- DE incidence 24th (was 19th) & mortality 24th (was 21st)
- racial disparity in incidence no longer stat. significant
- DE mortality down 28.3% vs. 22.6% U.S.

Challenges

- incidence in males still significantly higher than females
- mortality in males also significantly higher than females

Female Breast Cancer

Progress

- DE 3rd highest in nation for breast cancer screening in 2012
- local stage dx = 65.1% versus U.S = 62.2%
- narrowing of racial disparity for local and regional stage @ dx
- mortality declined 28.7% in DE vs. 18.4% U.S.

Challenges

- most common cancer in women
- since 1996-2000, DE incidence decreased 6.9% vs. U.S. down 11.1%
- among blacks, DE incidence increased 7.2% while U.S. rate down 1.4%
- no decline in distant stage

Prostate Cancer

Progress

- DE PSA rate 2nd highest - 52.7% vs. 45.2% U.S.
- since 1980-1984, % local stage increased from 50% to 73.2%
- DE cases diagnosed in local stage = 85.8% vs. 80.0% U.S.
- DE cases diagnosed in distant stage = 2.9% vs. 4.1% U.S.

Challenges

- more conversations with healthcare providers
- DE's incidence significantly higher than U.S.
- incidence significantly higher in blacks than whites
- incidence increasing 13.4% among blacks vs. 8.7% whites

Burden of HPV-Associated Cancers

- two prophylactic vaccines in 2006
- Delaware's vaccination rate (3+ doses) higher among blacks than whites (49.6% vs. 44.7 %)
- Delaware's vaccination rate significantly higher than U.S.
- cancer cases **associated with** HPV
- cancer cases **attributable to** HPV

Delaware Cancer Consortium Data Committee

Goal 1 of the Data Committee:

Ensure utilization of Delaware Cancer Registry data
for public health and surveillance research

- Current Informal Investigations
 - liver cancer
 - melanoma of the skin

Next Steps – Incidence & Mortality Report – 2007-2011

- all cancer sites combined
- breast, colorectal, lung and prostate cancers
- additional cancers:
 - kidney cancer
 - leukemia
 - multiple myeloma
 - thyroid cancer
- special chapter on liver cancer and hepatitis C
- census tract analyses

website:

<http://dhss.delaware.gov/dph/dpc/cancer.html>

Questions?